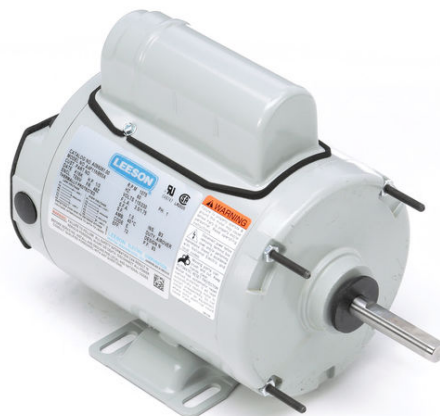


PRODUCT INFORMATION PACKET



Model No: M099261.00
Catalog No: M099261.00
0.33 HP Agricultural Motor, 1 phase, 1200 RPM, 115/230 V, 48Y Frame, TEAO
Agricultural Motors



Regal and Leeson are trademarks of Regal Rexnord Corporation or one of its affiliated companies.
©2021 Regal Rexnord Corporation, All Rights Reserved. MC017097E



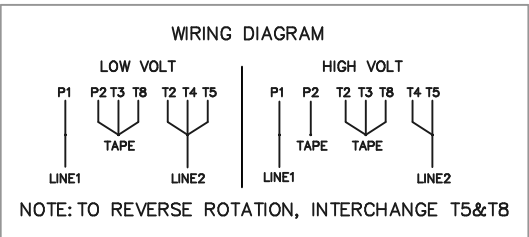
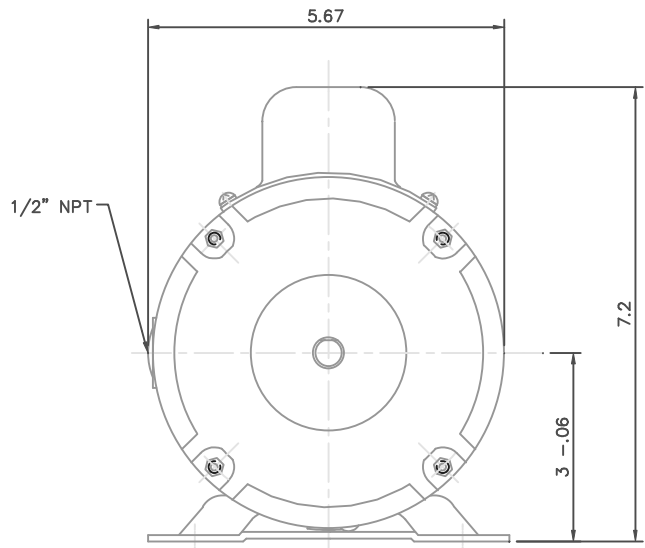
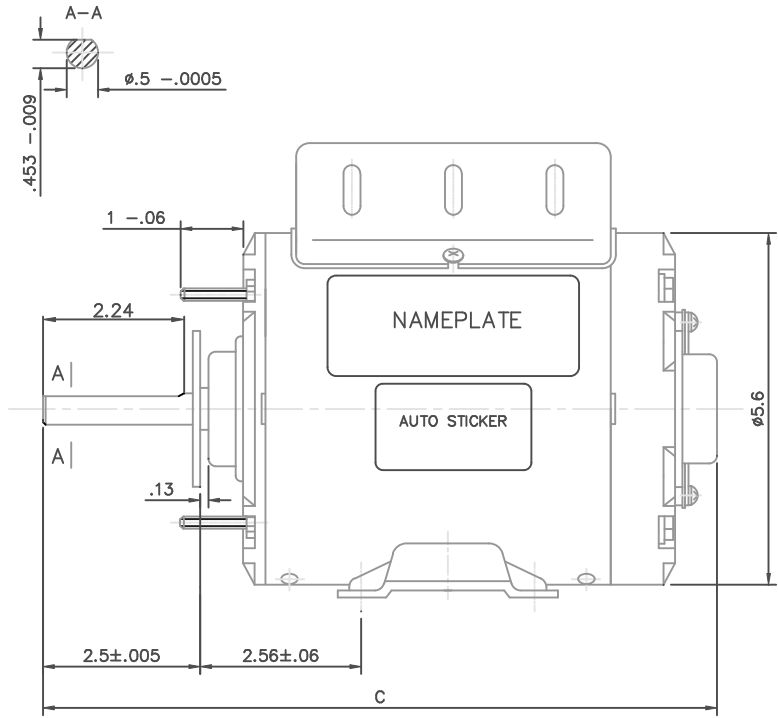


Nameplate Specifications

Output HP	0.33 Hp	Output KW	0.25 kW
Frequency	60 Hz	Voltage	115/230 V
Current	3.0/1.5 A	Speed	1075 rpm
Service Factor	1	Phase	1
Efficiency	71 %	Power Factor	95
Duty	Continuous	Insulation Class	B
Design Code	N	KVA Code	C
Frame	48Y	Enclosure	Totally Enclosed Air Over
Thermal Protection	Automatic	Ambient Temperature	40 °C
Drive End Bearing Size	6203	Opp Drive End Bearing Size	6203
UL	Recognized	CSA	Y
CE	N	IP Code	43
Number of Speeds	1		

Technical Specifications

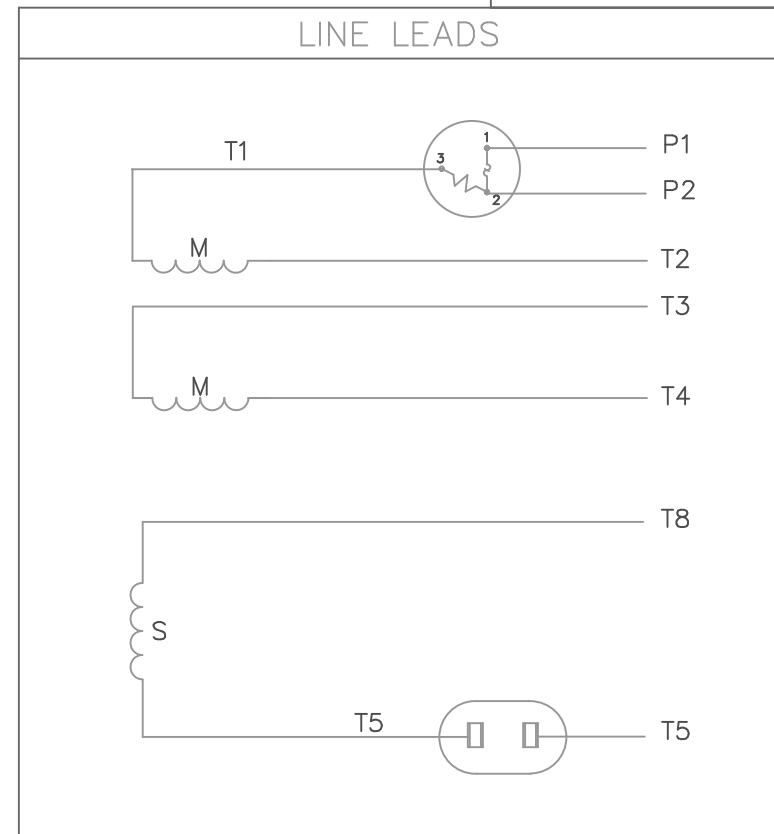
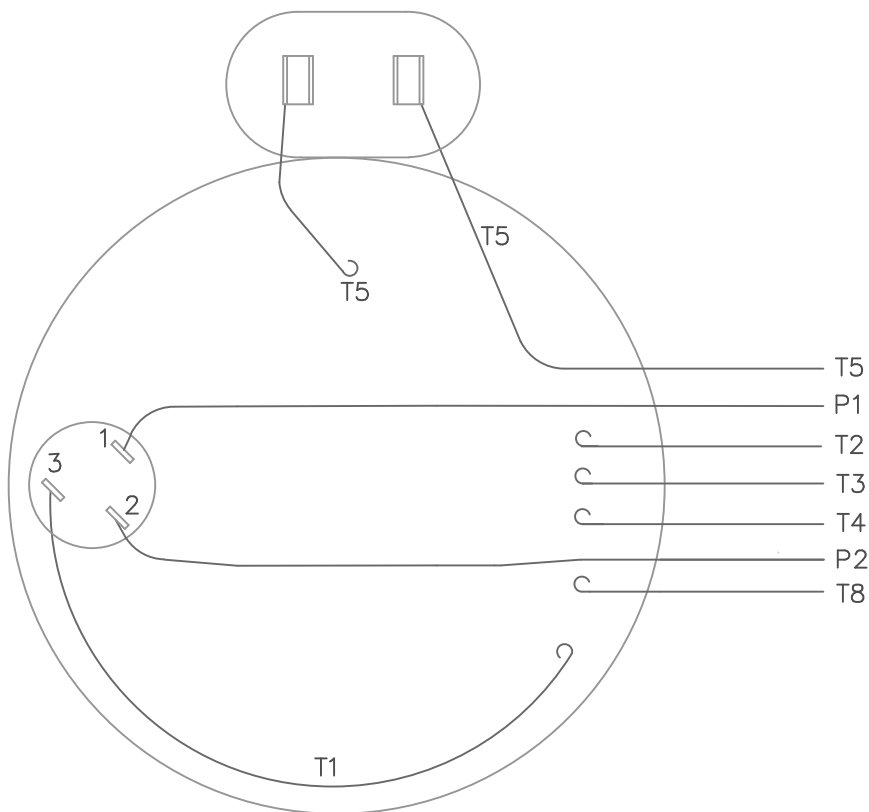
Electrical Type	Permanent Split Capacitor	Starting Method	Across The Line
Poles	6	Rotation	Selective Counterclockwise
Resistance Main	9.242 Ohms	Mounting	Rigid Base
Motor Orientation	Horizontal	Drive End Bearing	Ball
Opp Drive End Bearing	Ball	Frame Material	Rolled Steel
Shaft Type	Single Special Extension	Overall Length	12.55 in
Shaft Diameter	0.500 in	Shaft Extension	2.24 in
Assembly/Box Mounting	F1 ONLY		
Connection Drawing	005109.01	Outline Drawing	16987802-M099261



LEESON CAT.NO.	C
M099260	11.55
M099261	12.55
M099262	11.34
M099946	13.55

		TOLERANCES UNLESS SPECIFIED		LEESON ELECTRIC MOTORS GEARMOTORS AND DRIVES		DRAWN RLW 07/23/02			
		DEC.	INCHES			CHK	APPD		
		.X	±.1	TITLE OUTLINE 48 FRAME WITH BASE		SCALE	1=50		
01	REDRAWN TO CURRENT DIMENSION STANDARDS, EDIT COLUMN C TO NEW DIMENSION	.XX	±.03			REF			
		.XXX	±.005			FMF			
		.XXXX	±.0005	FINISH		PREV			
		CHK	ANG			±1/2"			
NO. REVISION		BY & DATE		RFP	CAD FILE	16987802	SIZE	DRAWING NO.	REV.
THIS DRAWING IN DESIGN AND DETAIL IS OUR PROPERTY AND MUST NOT BE USED EXCEPT IN CONNECTION WITH OUR WORK ALL RIGHTS OF DESIGN AND INVENTION ARE RESERVED THIS IS AN ELECTRONICALLY GENERATED DOCUMENT - DO NOT SCALE THIS PRINT				DIST			B	169878 PG.02	01

VIEW FROM OUTSIDE OF MOTOR AT SWITCH END.



	ROTATION FACING LEAD END	L1	L2	JOIN	INSULATE SEPARATELY
HIGH VOLT	C.C.W.	P1	T4 T5	T2, T3 T8	P2
	C.W.	P1	T4 T8	T2, T3 T5	P2
LOW VOLT	C.C.W.	P1	T2, T4 T5	P2, T3 T8	--
	C.W.	P1	T2, T4 T8	P2, T3 T5	--

				TOLERANCES UNLESS OTHERWISE SPECIFIED		
				DEC.	INCHES	METRIC
				.X	±	±
				.XX	±	±
08	REDRAWN ON CAD	DBT 05/28/97		.XXX	±	±
NO.	REVISION	BY & DATE	CH'K'D.	.XXXX	±	±
THIS DRAWING IN DESIGN AND DETAIL IS OUR PROPERTY AND MUST NOT BE USED EXCEPT IN CONNECTION WITH OUR WORK ALL RIGHTS OF DESIGN AND INVENTION ARE RESERVED THIS IS AN ELECTRONICALLY GENERATED DOCUMENT - DO NOT SCALE THIS PRINT				FRACTIONS	±	
				ANGLES	±	

LEESON ELECTRIC CORPORATION

DRAWN JRW 10/01/75	TITLE	EXTERNAL WIRING DIAGRAM	
APPR. JBM 10/02/75	TYPE "P" W/PROTECTOR		
R.F.P.	MAT'L.	DECAL - 004011	BRF
SCALE 1=1	FINISH	REV. 08	DRAWING NO. 005109-01
REF. 005003			
FMF W-P5567			



1051 CHEYENNE AVE.
GRAFTON, WI 53024
PH. 262-377-8810

CERTIFICATION DATA SHEET

CONN. DIAGRAM: 005109.01
OUTLINE: 16987802-M099261
WINDING #: QP5561 NR 3 A

CATALOG #: M099261.00
MOUNTING: F1 ONLY

TYPICAL MOTOR PERFORMANCE DATA

HP	kW	SYNC. RPM	F.L. RPM	FRAME	ENCLOSURE	KVA CODE	DESIGN
1/3	0.25	1200	1075	48Y	TEAO	C	N

PH	Hz	VOLTS	AMPS	START TYPE	DUTY	INSL	S.F.	AMB°C
1	60	115/230	3.0/1.5	ACROSS THE LINE	CONTINUOUS	B3	1.0	40

FULL LOAD EFF:	71	3/4 LOAD EFF:	68.3	1/2 LOAD EFF:	58.6	GTD. EFF	ELEC. TYPE
FULL LOAD PF:	95	3/4 LOAD PF:	93.7	1/2 LOAD PF:	91.9	65	PSC 1 SPEED

F.L. TORQUE	LOCKED ROTOR AMPS	L.R. TORQUE	B.D. TORQUE	F.L. RISE°C
24 OZ-FT	11 / 5.5	13.44 OZ-FT 56 %	46.84 OZ-FT 195 %	-

SOUND PRESSURE @ 3 FT.	SOUND POWER	ROTOR WK^2	MAX. WK^2	SAFE STALL TIME	STARTS / HOUR	APPROX. MOTOR WGT
- dBA	- dBA	0.065 LB-FT^2	0.1 LB-FT^2	10 SEC.	0	24 LBS.

*** SUPPLEMENTAL INFORMATION ***

DE BRACKET TYPE	ODE BRACKET TYPE	MOUNT TYPE	ORIENTATION	SEVERE DUTY	HAZARDOUS LOCATION	DRIP COVER	SCREENS	PAINT
STANDARD	STANDARD	RIGID	HORIZONTAL	FALSE	NONE	FALSE	NONE	VERIFY

BEARINGS		GREASE	SHAFT TYPE	SPECIAL DE	SPECIAL ODE	SHAFT MATERIAL	FRAME MATERIAL
DE	ODE						
BALL	BALL	POLYREX EM	SGL SPL EXT	SPECIAL	NONE	1045 HOT ROLLED (C-204)	ROLLED STEEL
6203	6203						

THERMO-PROTECTORS				THERMISTORS	CONTROL	SPACE HEATERS
THERMOSTATS	PROTECTORS	WDG RTDs	BRG RTDs			
NONE	AUTOMATIC	NONE	NONE	NONE	FALSE	NONE VOLTS

* N O T E S *	INVERTER TORQUE: NONE INV. HP SPEED RANGE: NONE
	ENCODER: NONE NONE NONE NONE NONE PPR
	BRAKE: NONE NONE NONE P/N NONE NONE NONE NONE FT-LB NONE V NONE Hz



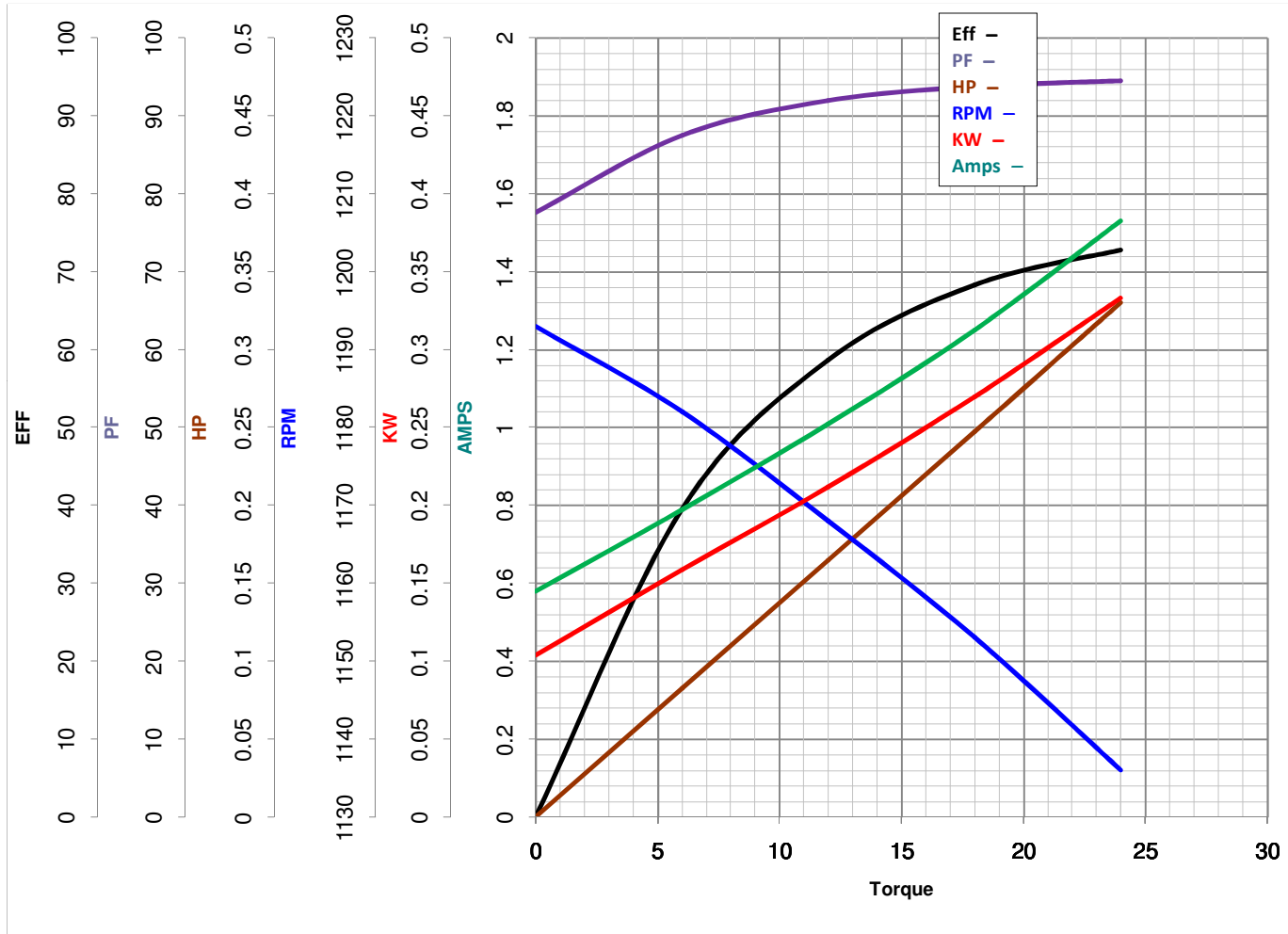
LEESON ELECTRIC CORPORATION
 TYPICAL PERFORMANCE CURVE for AC MOTOR

Model No M099261.00

Curve at 230 Volts HP 0.34 PHASE 1
60 HZ
0.33 HP VOLTS 115/230

Catalog No M099261.00

HZ 60 RPM 1075



Torque in Oz.Ft

FL TORQUE 24 Oz.Ft
 BD TORQUE 46.8 Oz.Ft
 LR TORQUE 13.44 Oz.Ft

FL AMPS 3.0/1.5
 PU TORQUE 12.4 Oz.Ft
 LR AMPS 5.51

WINDING QP5561-3

Date 4/24/2018