

PRODUCT INFORMATION PACKET



Model No: 120375.00
Catalog No: 120375.00
2 HP Agricultural Motor, 1 phase, 3600 RPM, 230 V, 145TZ Frame, TEAO
Agricultural Motors



Regal and Leeson are trademarks of Regal Rexnord Corporation or one of its affiliated companies.
©2021 Regal Rexnord Corporation, All Rights Reserved. MC017097E





Nameplate Specifications

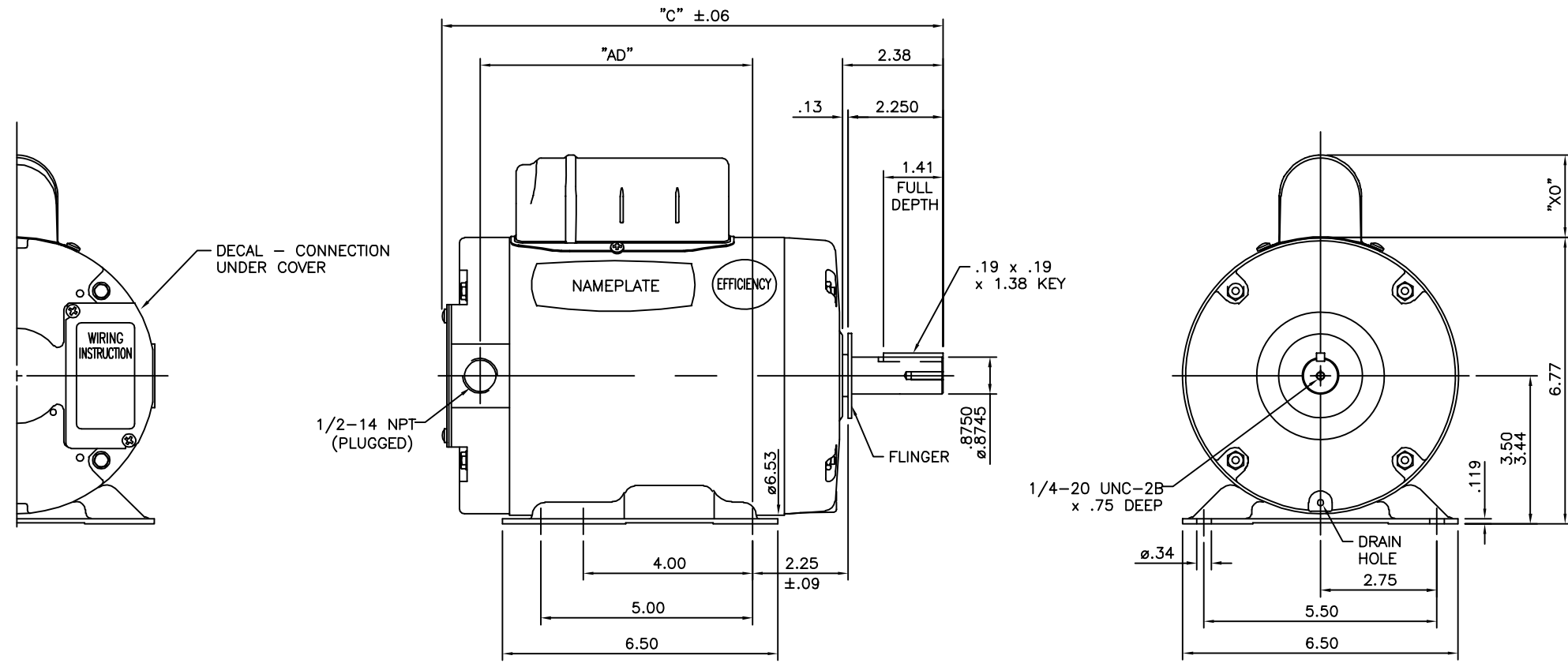
Output HP	2 Hp	Output KW	1.5 kW
Frequency	60 Hz	Voltage	230 V
Current	10.0 A	Speed	3450 rpm
Service Factor	1	Phase	1
Efficiency	74 %	Power Factor	87
Duty	Continuous	Insulation Class	B
Design Code	L	KVA Code	J
Frame	145TZ	Enclosure	Totally Enclosed Air Over
Thermal Protection	No	Ambient Temperature	40 °C
Drive End Bearing Size	6205	Opp Drive End Bearing Size	6203
UL	Recognized	CSA	Y
CE	N	IP Code	43
Number of Speeds	1		

Technical Specifications

Electrical Type	Capacitor Start Induction Run	Starting Method	Across The Line
Poles	2	Rotation	Selective Counterclockwise
Resistance Main	1.1 Ohms	Mounting	Rigid Base
Motor Orientation	Horizontal	Drive End Bearing	Ball
Opp Drive End Bearing	Ball	Frame Material	Rolled Steel
Shaft Type	T	Overall Length	12.84 in
Frame Length	7.50 in	Shaft Diameter	0.875 in
Shaft Extension	2.25 in	Assembly/Box Mounting	F1 ONLY
Outline Drawing	034948-750B	Connection Drawing	005044.03

This is an uncontrolled document once printed or downloaded and is subject to change without notice. Date Created:10/07/2021

034948



GASKETS THROUGHOUT

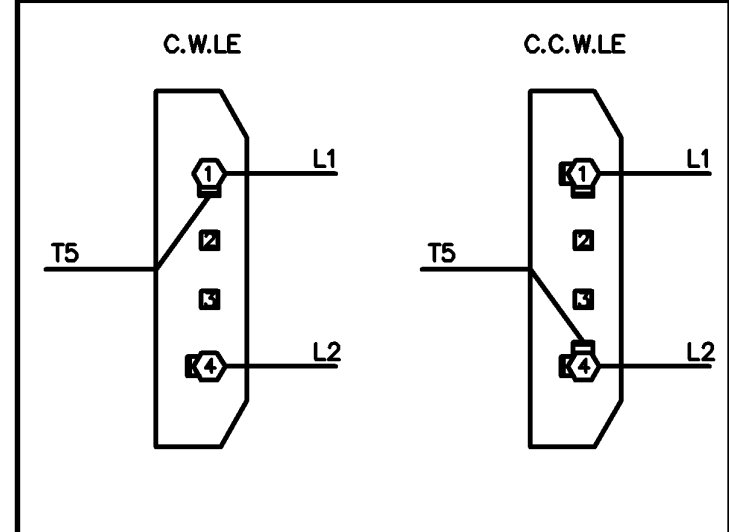
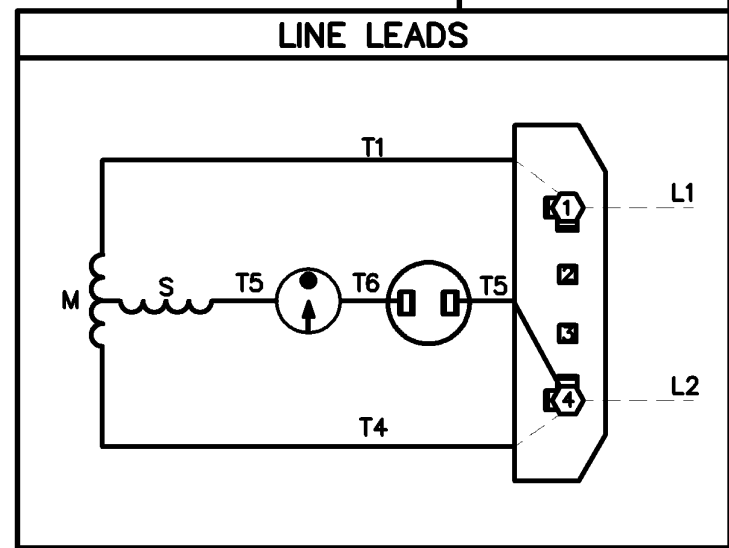
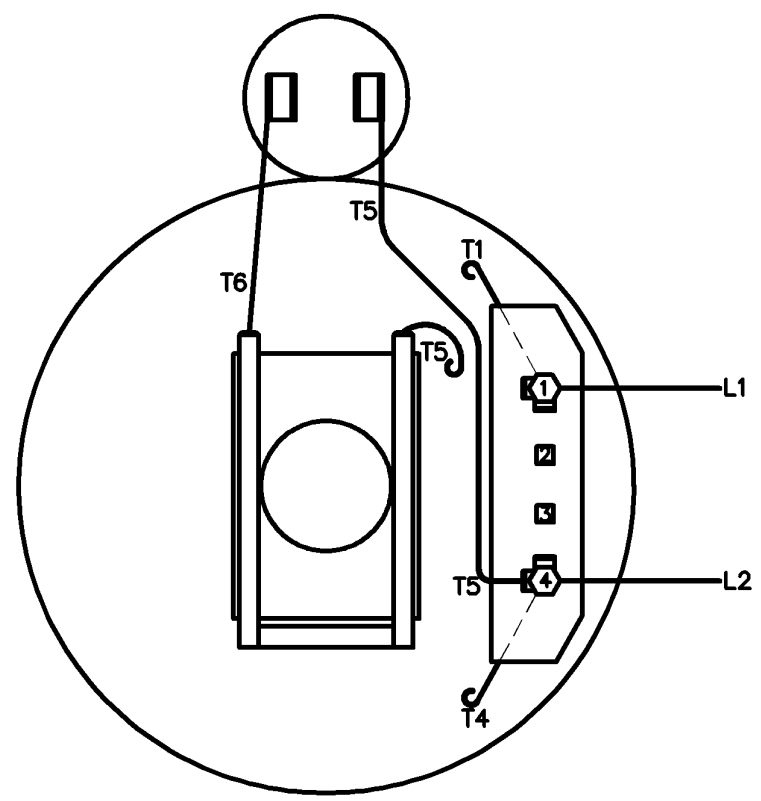
DASH NO.	"C"	"AD"	CAP. DASH	"XO"
600	11.34	5.94	A	1.54
650	11.84	6.44	B	2.01
700	12.34	6.94	C	2.25
750	12.84	7.44		
800	13.34	7.94		

ORACLE REV		NO.	REVISION	BY & DATE	CHK	ANG	±1/2'	FINISH	STOCK	PREV
02										
THIS DRAWING IN DESIGN AND DETAIL IS OUR PROPERTY AND MUST NOT BE USED EXCEPT IN CONNECTION WITH OUR WORK. ALL RIGHTS OF DESIGN AND INVENTION ARE RESERVED. THIS IS AN ELECTRONICALLY GENERATED DOCUMENT - DO NOT SCALE THIS PRINT.										

TOLERANCES UNLESS SPECIFIED		DEC.	INCHES
.X	±.1		
.XX	±.03		
.XXX	±.005		
.XXXX	±.0005		

LEESON		ELECTRIC MOTORS GEARMOTORS AND DRIVES		DRAWN	GWS 7/30/02
		TITLE		CHK	
		OUTLINE - 140T FRAME		APPD	
		TENV - RIGID		SCALE	3=8
		MAT'L		REF	033388
		FAN DUTY		FMF	120374
		RFP		PREV	
		CAD FILE	034948	SIZE	DRAWING NO.
		DIST	BRF	B	034948
				REV.	B

VIEW FROM OUTSIDE OF MOTOR AT SWITCH END



				TOLERANCES UNLESS OTHERWISE SPECIFIED		LEESON ELECTRIC CORPORATION			
				DECIMALS		TITLE			
				.00	± .01	DRAWN BJB 10/18/91	EXTERNAL WIRING DIAGRAM		
				.000	± .005	CH'K'D. GS 11/1/91	TYPE "C" W/O PROTECTOR		
				.0000	± .0005	APPR. KJH 11/1/91	MAT'L. DECAL 080412		
NO.	REVISION	BY	DATE	FRACTIONS	± 1/64	SCALE	1=1		
THIS DRAWING IN DESIGN AND DETAIL IS OUR PROPERTY AND MUST NOT BE USED EXCEPT IN CONNECTION WITH OUR WORK ALL RIGHTS OF DESIGN AND INVENTION ARE RESERVED				ANGLES	± 1/2'	REF.	005044-02		
				INCH/MM		FINISH		SIZE	DRAWING NO.
						A	005044-03		

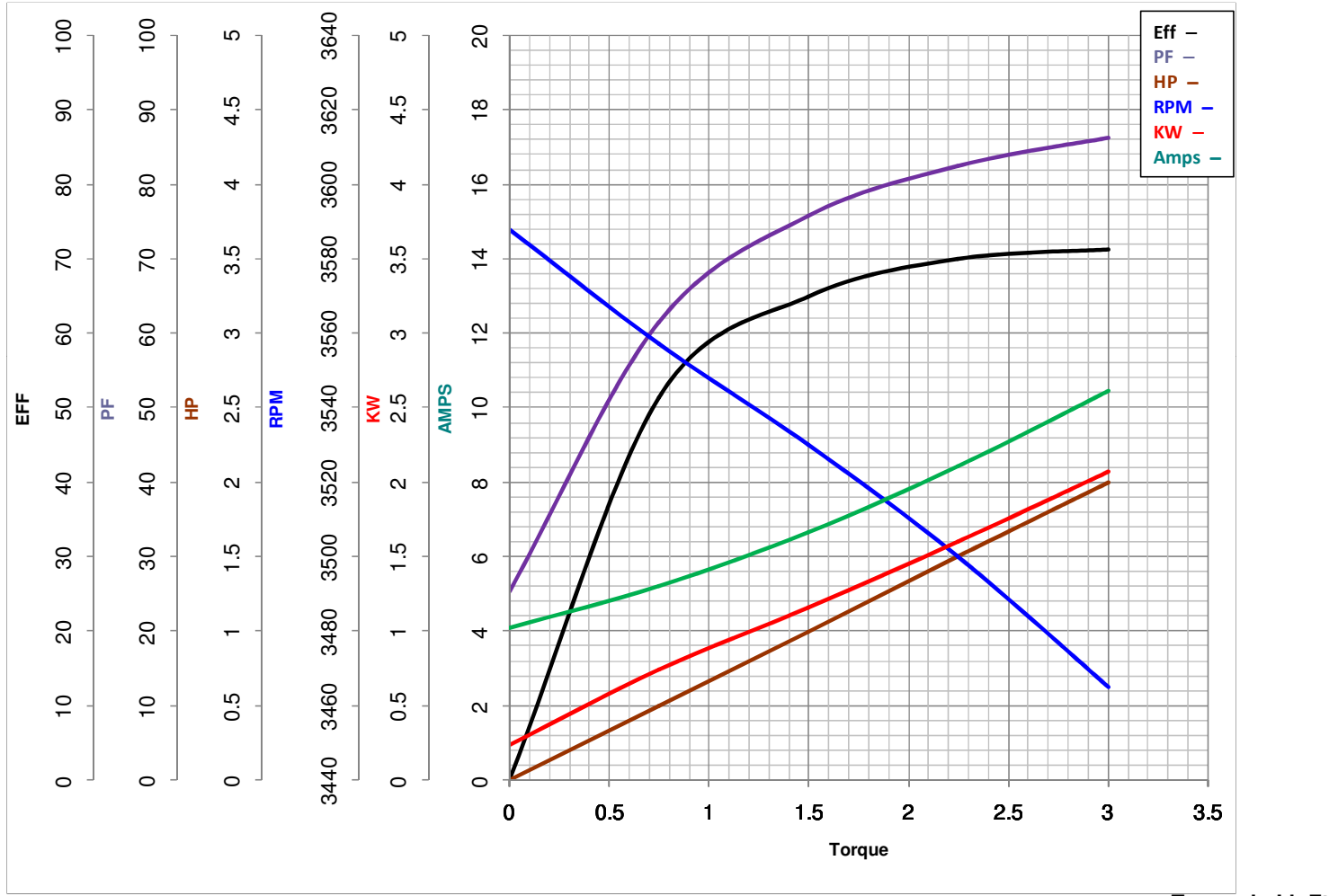


LEESON ELECTRIC CORPORATION
TYPICAL PERFORMANCE CURVE for AC MOTOR

Model No 120375.00

Catalog No 120375.00

Curve at 230 Volts HP 2.00 PHASE 1
60 HZ
2 HP VOLTS 230
HZ 60 RPM 3450



FL TORQUE	<u>3</u>	Lb.Ft	FL AMPS	<u>10</u>	
BD TORQUE	<u>8.8</u>	Lb.Ft	PU TORQUE	<u>7.3</u>	Lb.Ft
LR TORQUE	<u>6.83</u>	Lb.Ft	LR AMPS	<u>60.7</u>	
WINDING	C632258-4		Date	<u>5/2/2018</u>	