

# PRODUCT INFORMATION PACKET



Model No: 131994.00  
Catalog No: 131994.00  
3 HP Agricultural Motor, 1 phase, 1800 RPM, 230 V, 184TC Frame, TEFC  
Agricultural Motors



Regal and Leeson are trademarks of Regal Rexnord Corporation or one of its affiliated companies.  
©2021 Regal Rexnord Corporation, All Rights Reserved. MC017097E





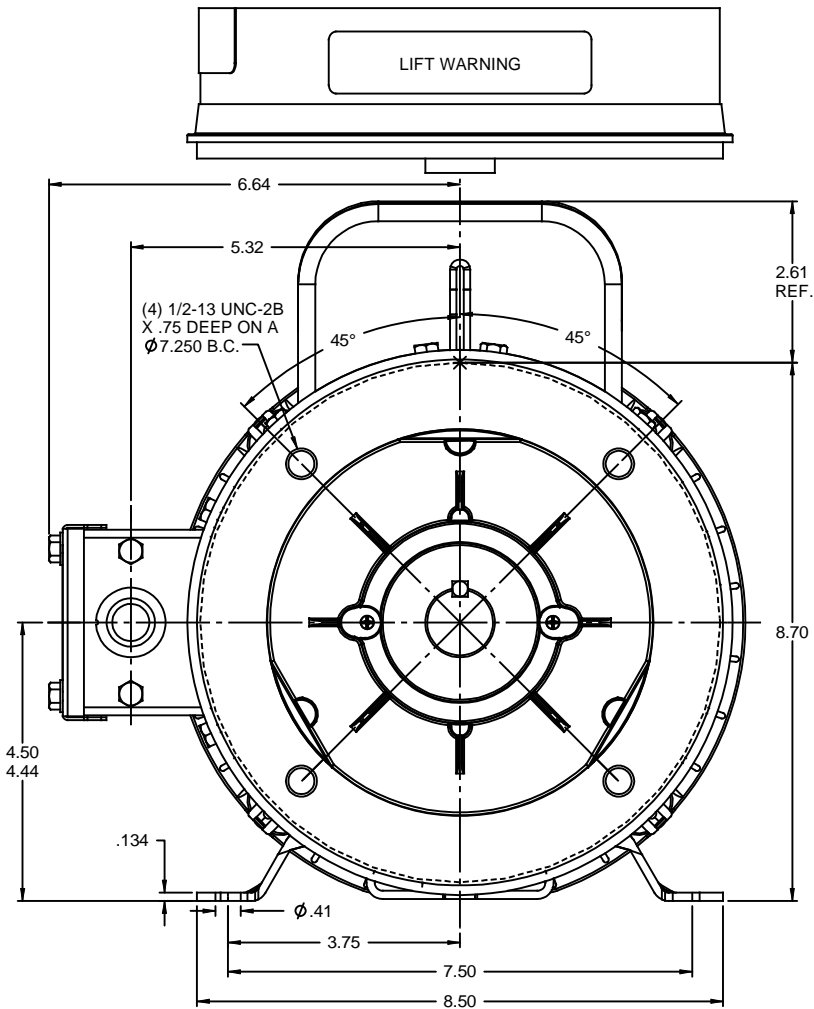
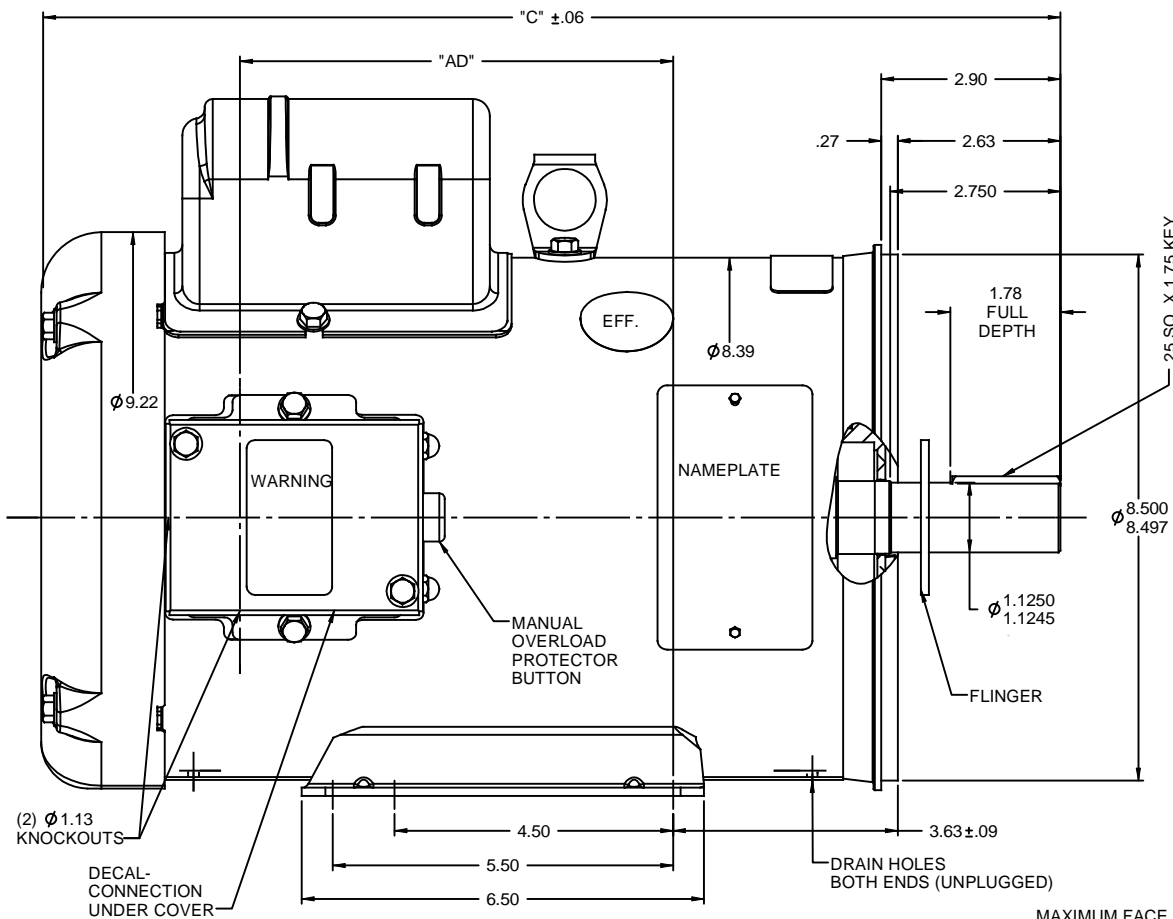
### Nameplate Specifications

Output HP	<b>3 Hp</b>	Output KW	<b>2.2 kW</b>
Frequency	<b>60 Hz</b>	Voltage	<b>230 V</b>
Current	<b>19.0 A</b>	Speed	<b>1740 rpm</b>
Service Factor	<b>1.15</b>	Phase	<b>1</b>
Efficiency	<b>75.5 %</b>	Power Factor	<b>68</b>
Duty	<b>Continuous</b>	Insulation Class	<b>F</b>
Design Code	<b>L</b>	KVA Code	<b>K</b>
Frame	<b>184TC</b>	Enclosure	<b>Totally Enclosed Fan Cooled</b>
Thermal Protection	<b>Manual</b>	Ambient Temperature	<b>40 °C</b>
Drive End Bearing Size	<b>6205</b>	Opp Drive End Bearing Size	<b>6206</b>
UL	<b>Recognized</b>	CSA	<b>Y</b>
CE	<b>N</b>	IP Code	<b>43</b>
Number of Speeds	<b>1</b>		

### Technical Specifications

Electrical Type	<b>Capacitor Start Induction Run</b>	Starting Method	<b>Across The Line</b>
Poles	<b>4</b>	Rotation	<b>Selective Counterclockwise</b>
Resistance Main	<b>.498 Ohms</b>	Mounting	<b>Rigid Base</b>
Motor Orientation	<b>Horizontal</b>	Drive End Bearing	<b>Ball</b>
Opp Drive End Bearing	<b>Ball</b>	Frame Material	<b>Rolled Steel</b>
Shaft Type	<b>T</b>	Overall Length	<b>16.47 in</b>
Frame Length	<b>11.00 in</b>	Shaft Diameter	<b>1.125 in</b>
Shaft Extension	<b>2.75 in</b>	Assembly/Box Mounting	<b>F1 ONLY</b>
Connection Drawing	<b>005110.01</b>	Outline Drawing	<b>035483-1100</b>

This is an uncontrolled document once printed or downloaded and is subject to change without notice. Date Created:10/07/2021



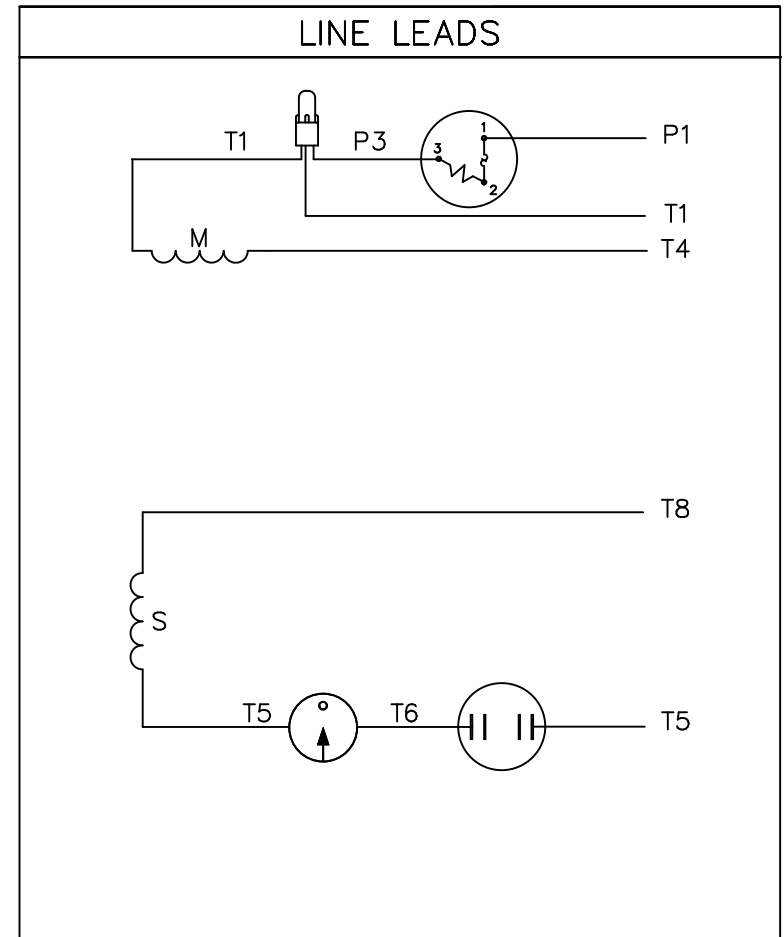
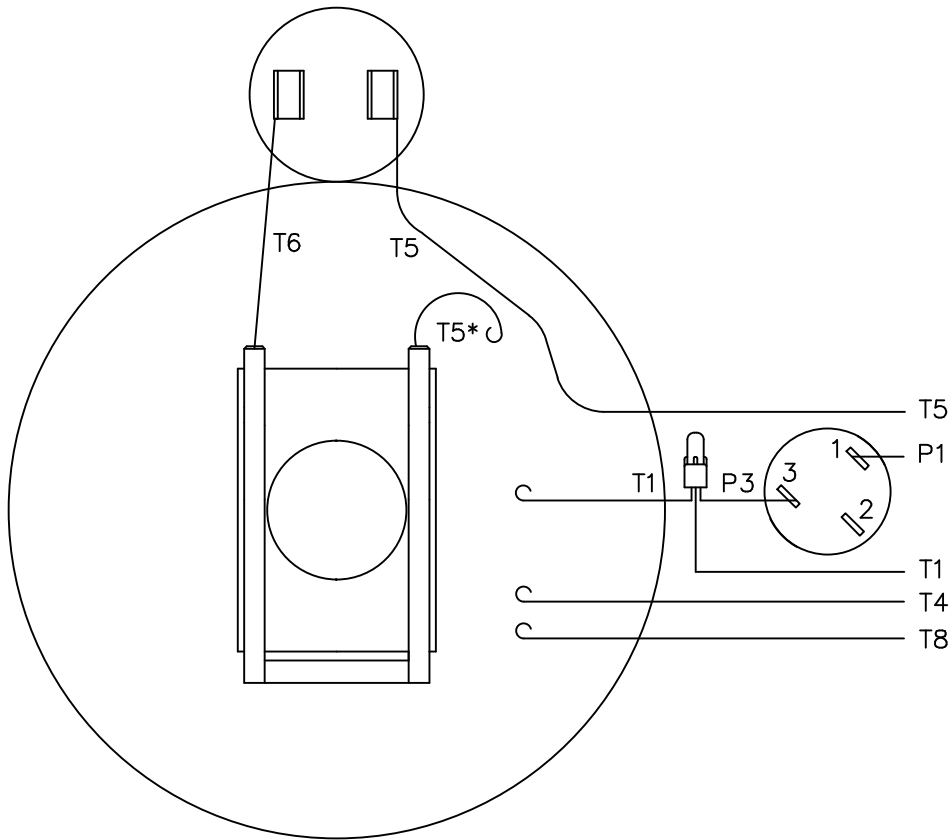
MAXIMUM FACE RUNOUT TO BE .004 T.I.R.  
 MAXIMUM PILOT ECCENTRICITY TO BE .004 T.I.R.  
 PERMISSIBLE SHAFT RUNOUT TO BE .002 T.I.R.

**MOTOR SPECIAL FEATURES**  
 DRAIN HOLES IN FRAME (UNPLUGGED)  
 MANUAL RESET OVERLOAD PROTECTOR  
 FLINGER  
 GASKETS THROUGHOUT

DASH NO.	"C"	"AD"
850	13.97	4.50
900	14.47	5.00
950	14.97	5.50
1000	15.47	6.00
1050	15.97	6.50
1100	16.47	7.00
1150	16.97	7.50
1200	17.47	8.00

REVISION		BY & DATE	CHK	ANG	FINISH	RFP	PREV	SIZE	DRAWING NO	REV
-	UPDATED & REDRAWN IN SOLIDWORKS	LST 11/12/2009	XX	XXXX	±.0005	MATL FARM DUTY		B	035483	-
TOLERANCES UNLESS SPECIFIED							DRAWN LST 2/27/04		REV	
INCHES							CHK RW 2/27/04		REV	
X ±.1							APPR KH 2/27/04		REV	
.XX ±.03							SCALE 1:2		REV	
.XXX ±.005							REF		REV	
- .XXXX ±.0005							FMF		REV	
TITLE OUTLINE - 180TC FRAME							PAGE		OF	
TEFC - RIGID "C"							DRAWING NO		REV	
NETWORK FILE NAME							035483		REV	

VIEW FROM OUTSIDE OF MOTOR AT SWITCH END.



ROTATION FACING LEAD END	L1	L2	JOIN & INSULATE
C.C.W.	P1	T4, T5	T1, T8
C.W.	P1	T4, T8	T1, T5

\* THIS LEAD MAY BE WHITE

NO.	REVISION	BY & DATE	CHK	TOLERANCES UNLESS SPECIFIED	
				DEC.	INCHES
10	ALTERNATE T5 LEAD MARKING WAS RED	RLW 8/6/02		.X	±.1
09	ADDED ALTERNATE T5 LEAD MARKING	RLW 6/5/02	KH	.XX	±.01
08	ADDED MISSING "T4" LEAD FROM EB VIEW	DBT 09/22/97	PG	.XXX	±.005
07	REDRAWN ON CAD	DBT 06/24/97		.XXXX	±.0005
				ANG	±1/2°



ELECTRIC MOTORS  
GEARMOTORS  
AND DRIVES

DRAWN	JRW 10/21/75
CHK	TEM
APPD	10/23/75
SCALE	1=1
REF	005105
FMF	W-C63236-2
PREV	

TITLE	EXTERNAL WIRING DIAGRAM TYPE "C" W/ PROTECTOR
MAT'L.	DECAL - 004015
FINISH	

THIS DRAWING IN DESIGN AND DETAIL IS OUR PROPERTY AND MUST NOT BE USED EXCEPT IN CONNECTION WITH OUR WORK ALL RIGHTS OF DESIGN AND INVENTION ARE RESERVED THIS IS AN ELECTRONICALLY GENERATED DOCUMENT - DO NOT SCALE THIS PRINT

RFP	CAD FILE	00511001	SIZE	DRAWING NO.	REV.
DIST NLV			A	005110-01	10



1051 CHEYENNE AVE.  
GRAFTON, WI 53024  
PH. 262-377-8810

**CERTIFICATION DATA SHEET**

CONN. DIAGRAM: 005110.01  
OUTLINE: 035483-1100  
WINDING #: C8429 FR 2 B

CATALOG #: 131994.00  
MOUNTING: F1 ONLY

**TYPICAL MOTOR PERFORMANCE DATA**

HP	kW	SYNC. RPM	F.L. RPM	FRAME	ENCLOSURE	KVA CODE	DESIGN
3	2.24	1800	1740	184TC	TEFC	K	L

PH	Hz	VOLTS	AMPS	START TYPE	DUTY	INSL	S.F.	AMB°C
1	60	230	19.0	ACROSS THE LINE	CONTINUOUS	F4	1.15	40

FULL LOAD EFF:	75.5	3/4 LOAD EFF:	71.6	1/2 LOAD EFF:	64.4	GTD. EFF	ELEC. TYPE
FULL LOAD PF:	68	3/4 LOAD PF:	60.5	1/2 LOAD PF:	50.3	72	CAP START IND RUN

F.L. TORQUE	LOCKED ROTOR AMPS	L.R. TORQUE	B.D. TORQUE	F.L. RISE°C
9 LB-FT	136	37.45 LB-FT 416 %	27.85 LB-FT 309 %	91

SOUND PRESSURE @ 3 FT.	SOUND POWER	ROTOR WK^2	MAX. WK^2	SAFE STALL TIME	STARTS / HOUR	APPROX. MOTOR WGT
0 dBA	10 dBA	0.51 LB-FT^2	0.5 LB-FT^2	10 SEC.	0	107 LBS.

**\*\*\* SUPPLEMENTAL INFORMATION \*\*\***

DE BRACKET TYPE	ODE BRACKET TYPE	MOUNT TYPE	ORIENTATION	SEVERE DUTY	HAZARDOUS LOCATION	DRIP COVER	SCREENS	PAINT
C-FACE	STANDARD	RIGID	HORIZONTAL	FALSE	NONE	FALSE	NONE	RED (ENAMEL)

BEARINGS		GREASE	SHAFT TYPE	SPECIAL DE	SPECIAL ODE	SHAFT MATERIAL	FRAME MATERIAL
DE	ODE						
BALL	BALL	POLYREX EM	T	NONE	NONE	AISI 1045 (C-240)	ROLLED STEEL
6205	6206						

THERMO-PROTECTORS				THERMISTORS	CONTROL	SPACE HEATERS
THERMOSTATS	PROTECTORS	WDG RTDs	BRG RTDs			
NONE	MANUAL	NONE	NONE	NONE	FALSE	NONE VOLTS

\*  
N  
O  
T  
E  
S  
\*

<b>INVERTER TORQUE:</b> NONE
<b>INV. HP SPEED RANGE:</b> NONE
<b>ENCODER:</b> NONE NONE NONE NONE NONE PPR
<b>BRAKE:</b> NONE NONE NONE P/N NONE NONE NONE NONE FT-LB NONE V NONE Hz



**LEESON ELECTRIC CORPORATION**  
 TYPICAL PERFORMANCE CURVE for AC MOTOR

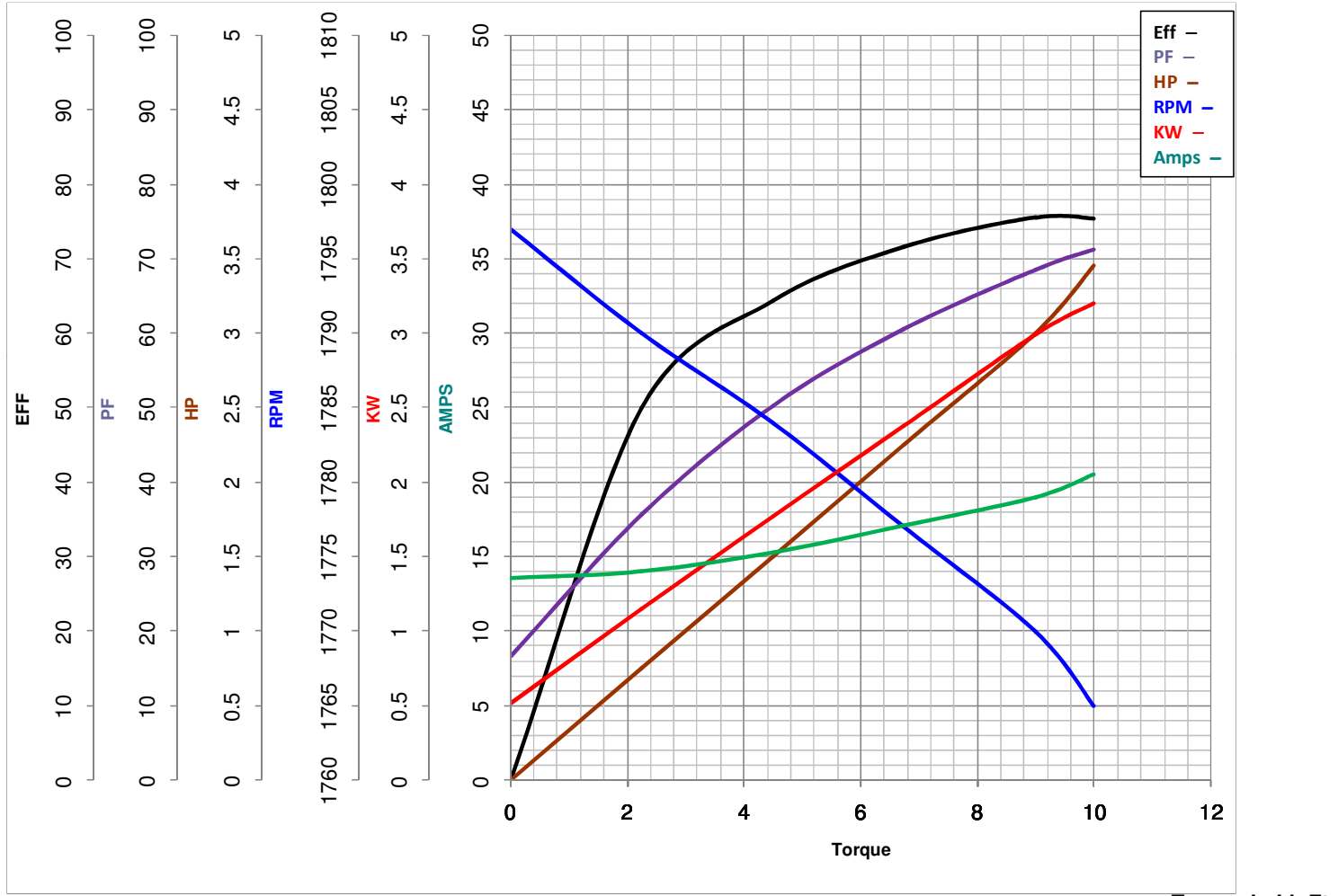
Curve at 230 Volts      HP 3.00      PHASE 1  
60 HZ  
3 HP      VOLTS 230

Model No 131994.00

Catalog No 131994.00

HZ 60

RPM 1740



FL TORQUE	<u>9</u>	Lb.Ft	FL AMPS	<u>19</u>	
BD TORQUE	<u>27.9</u>	Lb.Ft	PU TORQUE	<u>23.5</u>	Lb.Ft
LR TORQUE	<u>37.45</u>	Lb.Ft	LR AMPS	<u>136</u>	
WINDING	C8429-2		Date	<u>3/27/2018</u>	