

# PRODUCT INFORMATION PACKET



Model No: 117693.00  
Catalog No: 117693.00  
1.50 HP Agricultural Motor, 1 phase, 1800 RPM, 115/208-230 V, 56H Frame, TEFC  
Agricultural Motors



Regal and Leeson are trademarks of Regal Rexnord Corporation or one of its affiliated companies.  
©2021 Regal Rexnord Corporation, All Rights Reserved. MC017097E





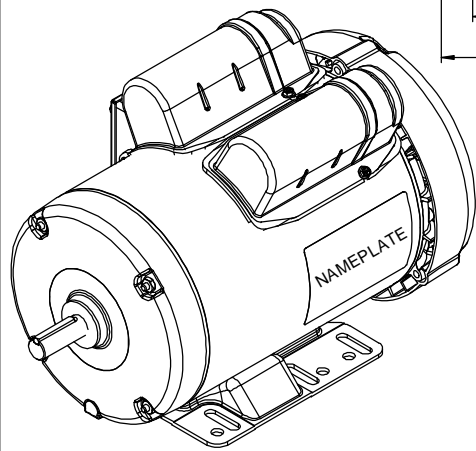
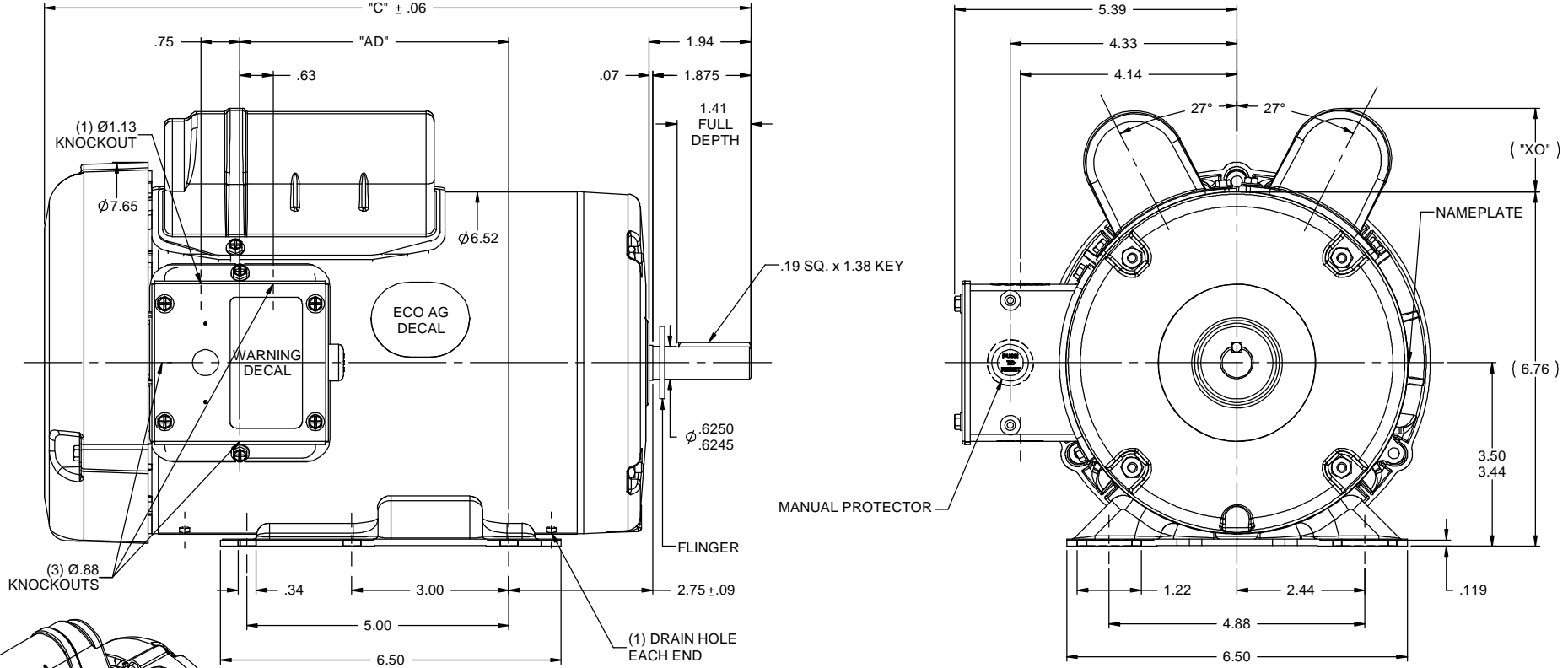
### Nameplate Specifications

Output HP	1.50 Hp	Output KW	1.1 kW
Frequency	60 Hz	Voltage	115/208-230 V
Current	13.0/6.6-6.5 A	Speed	1725 rpm
Service Factor	1.15	Phase	1
Efficiency	84 %	Power Factor	89
Duty	Continuous	Insulation Class	B
Design Code	L	KVA Code	J
Frame	56H	Enclosure	Totally Enclosed Fan Cooled
Thermal Protection	Manual	Ambient Temperature	40 °C
Drive End Bearing Size	6203	Opp Drive End Bearing Size	6203
UL	Recognized	CSA	Y
CE	N	IP Code	43
Number of Speeds	1		

### Technical Specifications

Electrical Type	Capacitor Start Capacitor Run	Starting Method	Across The Line
Poles	4	Rotation	Selective Counterclockwise
Resistance Main	5.48 Ohms	Mounting	Rigid Base
Motor Orientation	Horizontal	Drive End Bearing	Ball
Opp Drive End Bearing	Ball	Frame Material	Rolled Steel
Shaft Type	NEMA 56	Overall Length	13.49 in
Frame Length	8.00 in	Shaft Diameter	0.625 in
Shaft Extension	1.87 in	Assembly/Box Mounting	F1 ONLY
Outline Drawing	607-0038-800B	Connection Drawing	005053.02

RBC PROPRIETARY AND CONFIDENTIAL INFORMATION  
 This document is the property of REGAL BELOIT CORPORATION ("RBC") including its subsidiaries and divisions and contains proprietary information of RBC. This document is loaned on the express condition that neither it nor the information contained therein shall be disclosed to others without the express written consent of RBC, and that the information shall be used by the recipient only as approved expressly by RBC. This document shall be returned to RBC upon its request. This document may be subject to certain restrictions under U.S. export control laws and regulations.



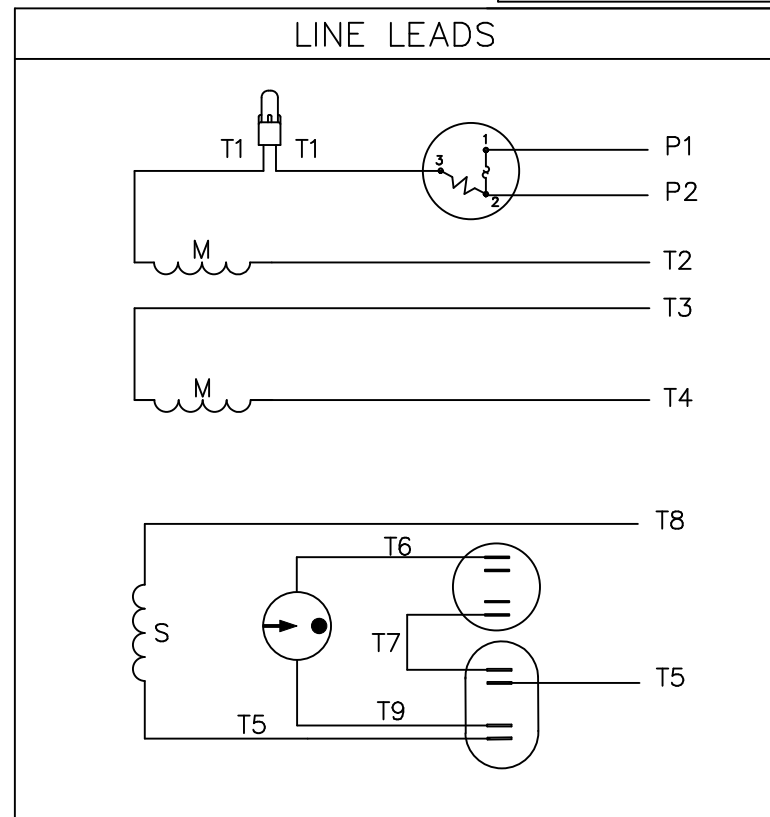
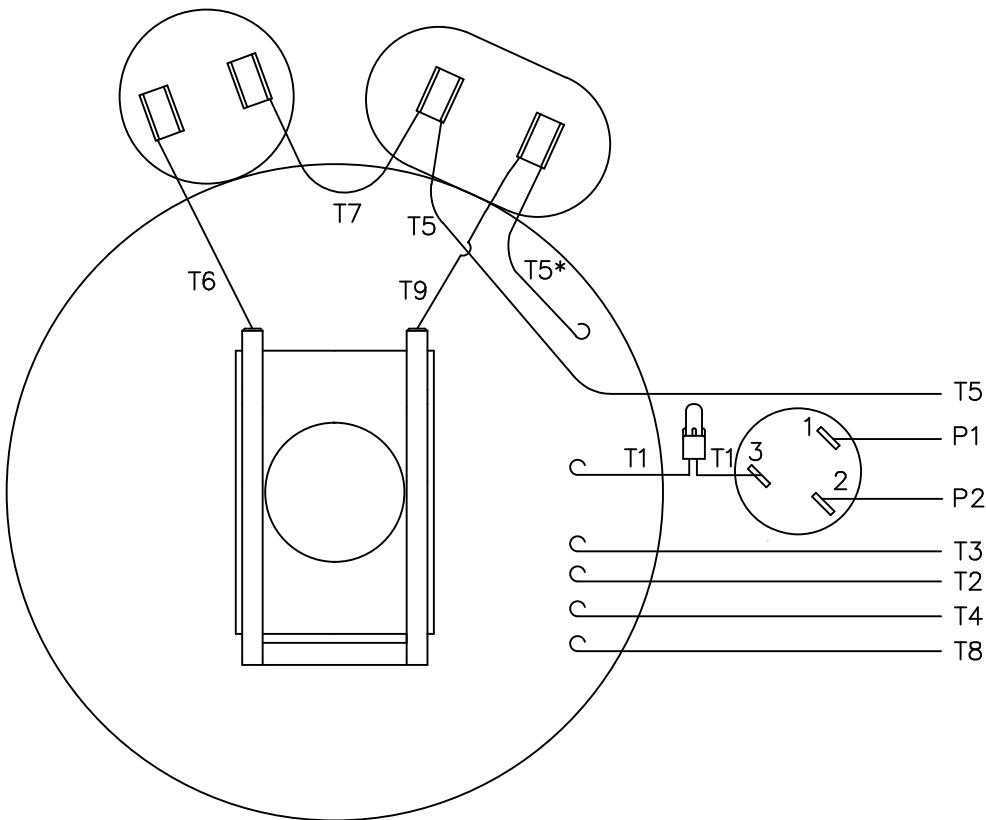
DASH NO.	"C"	"AD"	CAP DASH	"XO"
700	12.49	4.13	A	1.15
750	12.99	4.63	A	1.15
800	13.49	5.13	B	1.60
850	13.99	5.63	C	1.82

- SPECIAL FEATURES:  
 1) GASKETS THROUGHOUT.  
 2) FLINGER ON SHAFT  
 3) MANUAL PROTECTOR

TOLERANCES UNLESS SPECIFIED		DEC		INCHES		ELECTRIC MOTORS GEARMOTORS AND DRIVES		DRAWN GWS 2/8/12	
X	±.1							CHK	
XX	±.03							APPR	
XXX	±.005							SCALE	1:2
XXXX	±.0005							REF	028930
								FMF	117693
NO	REVISION	BY & DATE	CHK	LANG	±1/2"	FINISH		PAGE	1 OF 1
								SIZE	B
								DRAWING NO	607-0038
								REV	



VIEW FROM OUTSIDE OF MOTOR AT SWITCH END.



	ROTATION FACING LEAD END	L1	L2	JOIN	INSULATE SEPARATELY
HIGH VOLT	C.C.W.	P1	T4 T5	T2,T3 T8	P2
	C.W.	P1	T4 T8	T2,T3 T5	P2
LOW VOLT	C.C.W.	P1	T2,T4 T5	P2,T3 T8	-----
	C.W.	P1	T2,T4 T8	P2,T3 T5	-----

\* THIS LEAD MAY BE WHITE

		TOLERANCES UNLESS SPECIFIED	
		DEC.	INCHES
		.X	±.1
		.XX	±.01
04	ADDED "*" TO T5	RLW 7/22/02	.XXX ±.005
03	REDRAWN ON CAD	DBT 05/27/97	.XXXX ±.0005
NO.	REVISION	BY & DATE	CHK ANG ±1/2"

**REGAL-BELOIT Motor Technologies Group**

REGAL-BELOIT Motor Technologies Group

**EXTERNAL WIRING DIAGRAM TYPE "K" W/PROTECTOR**

DECAL 004011

FINISH	RFP	CAD FILE	00505302	SIZE	DRAWING NO.	REV.
DIST				A	005053-02	04

DRAWN ADH 06/16/76  
CHK WRK 06/30/76  
APPD  
SCALE 1=1  
REF  
FMF 6K17FB8A  
PREV



CERTIFICATION DATA SHEET

1051 CHEYENNE AVE.  
GRAFTON, WI 53024  
PH. 262-377-8810

CONN. DIAGRAM: 005053.02

CATALOG #: 117693.00

OUTLINE: 607-0038-800B

MOUNTING: F1 ONLY

WINDING #: K634339 FR 3 A

TYPICAL MOTOR PERFORMANCE DATA

HP	kW	SYNC. RPM	F.L. RPM	FRAME	ENCLOSURE	KVA CODE	DESIGN
1 1/2	1.12	1800	1725	56H	TEFC	J	L

PH	Hz	VOLTS	AMPS	START TYPE	DUTY	INSL	S.F.	AMB°C
1	60	115/208-230	13/6.6-6.5	ACROSS THE LINE	CONTINUOUS	B4	1.15	40

FULL LOAD EFF:	84	3/4 LOAD EFF:	79.8	1/2 LOAD EFF:	73.9	GTD. EFF		ELEC. TYPE	
FULL LOAD PF:	89	3/4 LOAD PF:	85.5	1/2 LOAD PF:	78.1	81.5		CAP START CAP RUN	

F.L. TORQUE	LOCKED ROTOR AMPS	L.R. TORQUE	B.D. TORQUE	F.L. RISE°C
4.5 LB-FT	96 / 48	12.67 LB-FT 282 %	11.79 LB-FT 262 %	53

SOUND PRESSURE @ 3 FT.	SOUND POWER	ROTOR WK^2	MAX. WK^2	SAFE STALL TIME	STARTS / HOUR	APPROX. MOTOR WGT
0 dBA	10 dBA	0.14 LB-FT^2	0 LB-FT^2	10 SEC.	0	43 LBS.

\*\*\* SUPPLEMENTAL INFORMATION \*\*\*

DE BRACKET TYPE	ODE BRACKET TYPE	MOUNT TYPE	ORIENTATION	SEVERE DUTY	HAZARDOUS LOCATION	DRIP COVER	SCREENS	PAINT
STANDARD	STANDARD	RIGID	HORIZONTAL	FALSE	NONE	FALSE	NONE	GREEN (ENAMEL)

BEARINGS		GREASE	SHAFT TYPE	SPECIAL DE	SPECIAL ODE	SHAFT MATERIAL	FRAME MATERIAL
DE	ODE						
BALL	BALL	POLYREX EM	STANDARD 56	NONE	NONE	1144 STRESSPROOF (C-223)	ROLLED STEEL
6203	6203						

THERMO-PROTECTORS				THERMISTORS	CONTROL	SPACE HEATERS
THERMOSTATS	PROTECTORS	WDG RTDs	BRG RTDs			
NONE	MANUAL	NONE	NONE	NONE	FALSE	NONE VOLTS

\*  
N  
O  
T  
E  
S

<b>INVERTER TORQUE:</b> NONE
<b>INV. HP SPEED RANGE:</b> NONE
<b>ENCODER:</b> NONE
NONE NONE
NONE NONE PPR
<b>BRAKE:</b> NONE NONE
NONE P/N NONE
NONE NONE
NONE FT-LB NONE V NONE Hz



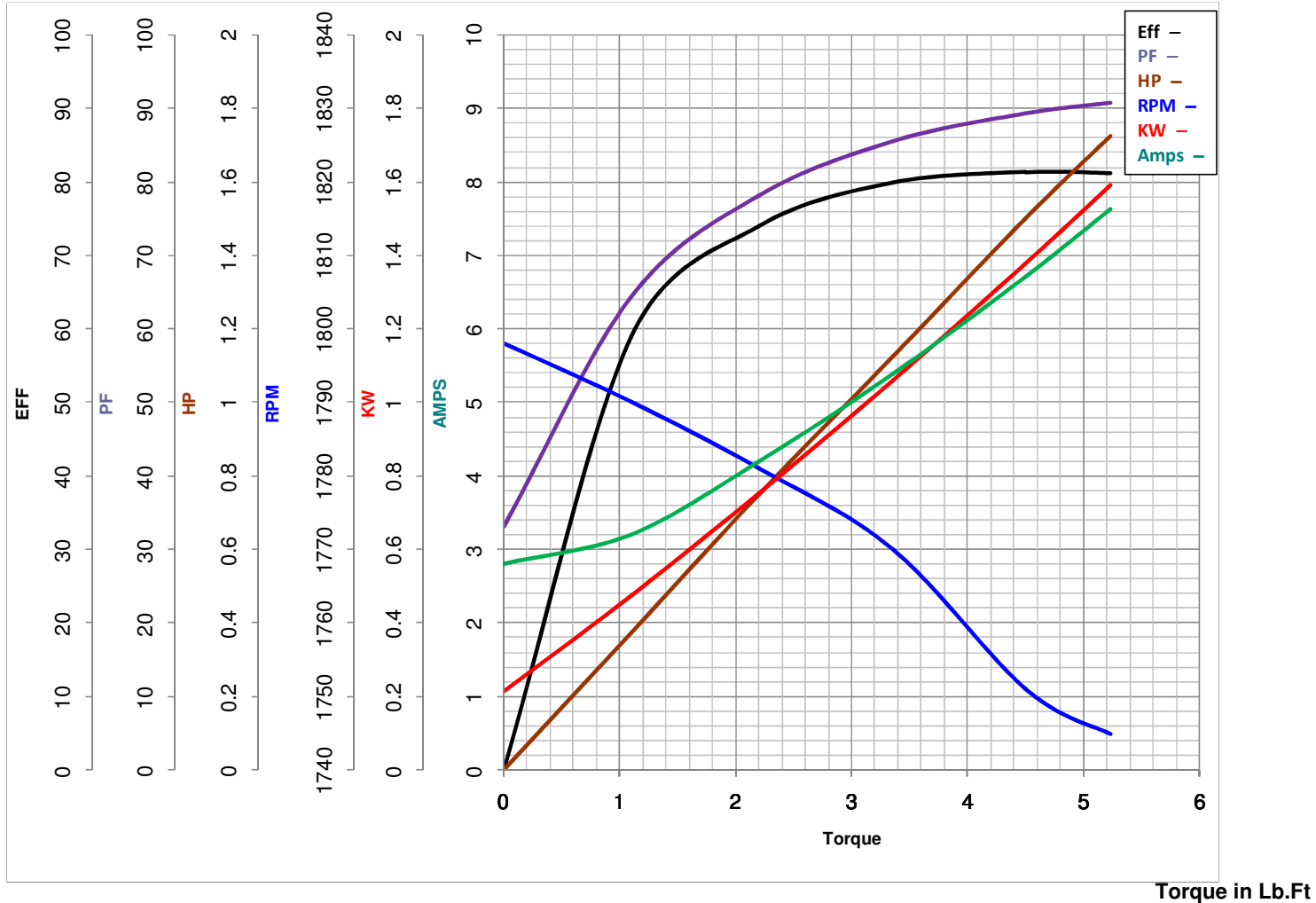
**LEESON ELECTRIC CORPORATION**  
 TYPICAL PERFORMANCE CURVE for AC MOTOR

Model No 117693.00

Curve at 230 Volts HP 1.50 PHASE 1  
60 HZ  
1.5 HP VOLTS 115/208-230

Catalog No 117693.00

HZ 60 RPM 1725



Torque in Lb.Ft

FL TORQUE 4.5 Lb.Ft  
 BD TORQUE 11.8 Lb.Ft  
 LR TORQUE 12.67 Lb.Ft

FL AMPS 13/6.6-6.5  
 PU TORQUE 10.3 Lb.Ft  
 LR AMPS 48

WINDING K634339-3

Date 4/23/2018