

PRODUCT INFORMATION PACKET



Model No: 117690.00
Catalog No: 117690.00
0.50 HP Agricultural Motor, 1 phase, 1800 RPM, 115/208-230 V, 56 Frame, TEFC
Agricultural Motors



Regal and Leeson are trademarks of Regal Rexnord Corporation or one of its affiliated companies.
©2021 Regal Rexnord Corporation, All Rights Reserved. MC017097E





Nameplate Specifications

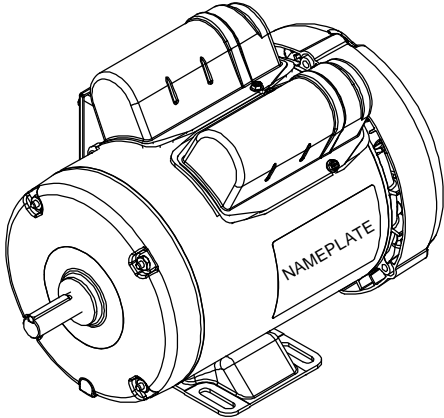
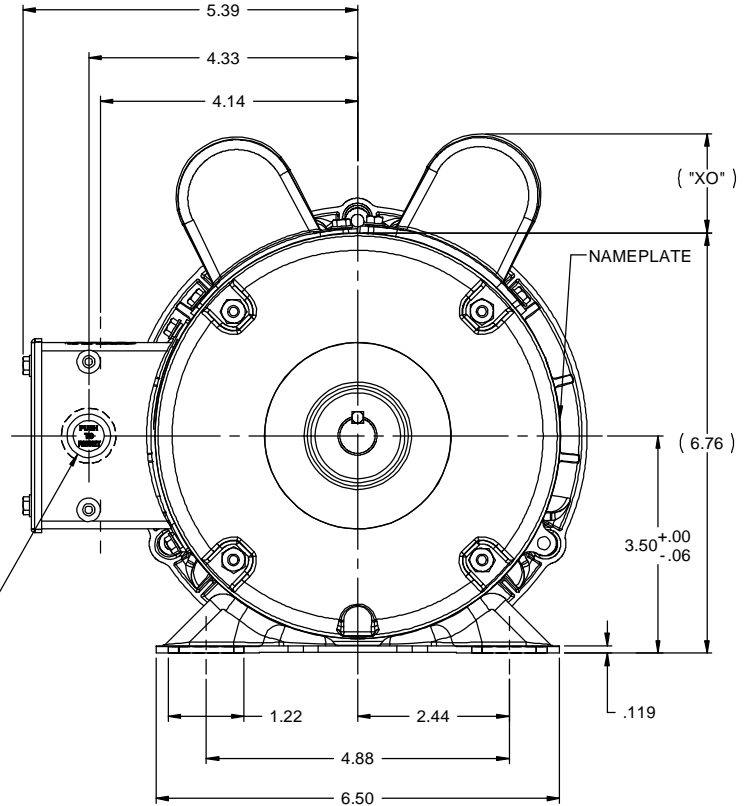
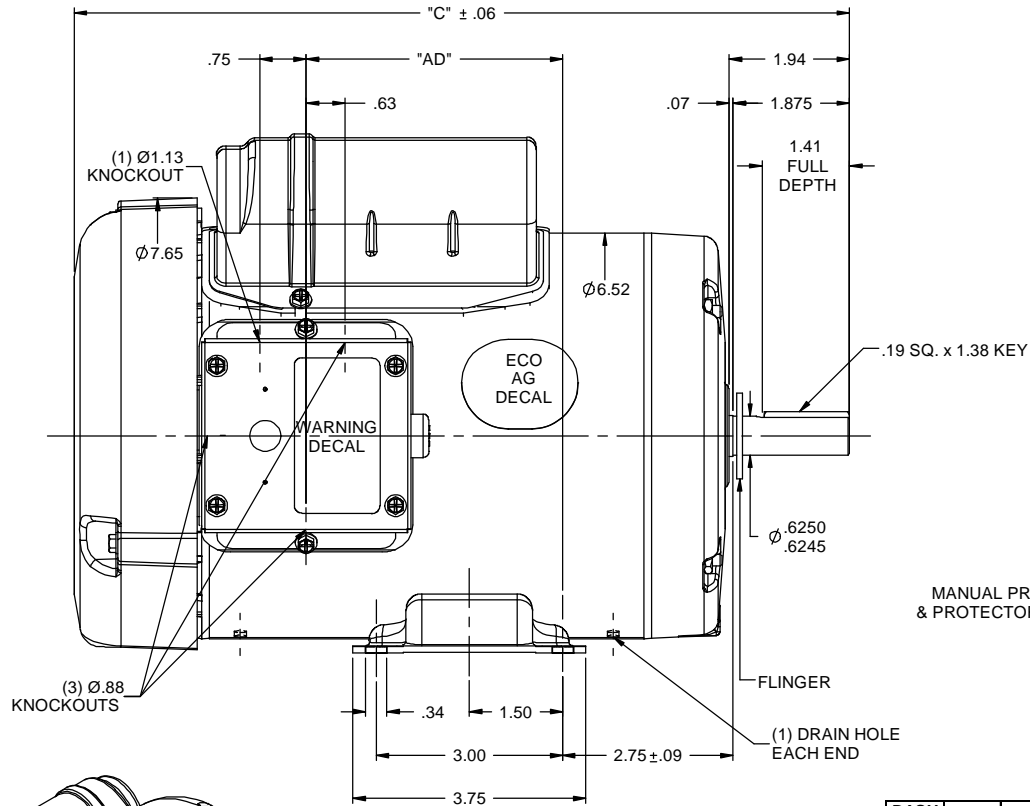
Output HP	0.50 Hp	Output KW	0.37 kW
Frequency	60 Hz	Voltage	115/208-230 V
Current	5.0/2.5 A	Speed	1725 rpm
Service Factor	1.15	Phase	1
Efficiency	78 %	Power Factor	83
Duty	Continuous	Insulation Class	B
Design Code	N	KVA Code	J
Frame	56	Enclosure	Totally Enclosed Fan Cooled
Thermal Protection	Manual	Ambient Temperature	40 °C
Drive End Bearing Size	6203	Opp Drive End Bearing Size	6203
UL	Recognized	CSA	Y
CE	N	IP Code	43
Number of Speeds	1		

Technical Specifications

Electrical Type	Capacitor Start Capacitor Run	Starting Method	Across The Line
Poles	4	Rotation	Selective Counterclockwise
Resistance Main	0 Ohms	Mounting	Rigid Base
Motor Orientation	Horizontal	Drive End Bearing	Ball
Opp Drive End Bearing	Ball	Frame Material	Rolled Steel
Shaft Type	NEMA 56	Overall Length	11.49 in
Frame Length	6.00 in	Shaft Diameter	0.625 in
Shaft Extension	1.88 in	Assembly/Box Mounting	F1 ONLY
Outline Drawing	607-0033-600B	Connection Drawing	005053.02

This is an uncontrolled document once printed or downloaded and is subject to change without notice. Date Created:10/07/2021

RBC PROPRIETARY AND CONFIDENTIAL INFORMATION
This document is the property of REGAL BELOIT CORPORATION ("RBC") including its subsidiaries and divisions and contains proprietary information of RBC. This document is loaned on the express condition that neither it nor the information contained therein shall be disclosed to others without the express written consent of RBC, and that the information shall be used by the recipient only as approved expressly by RBC. This document shall be returned to RBC upon its request. This document may be subject to certain restrictions under U.S. export control laws and regulations.

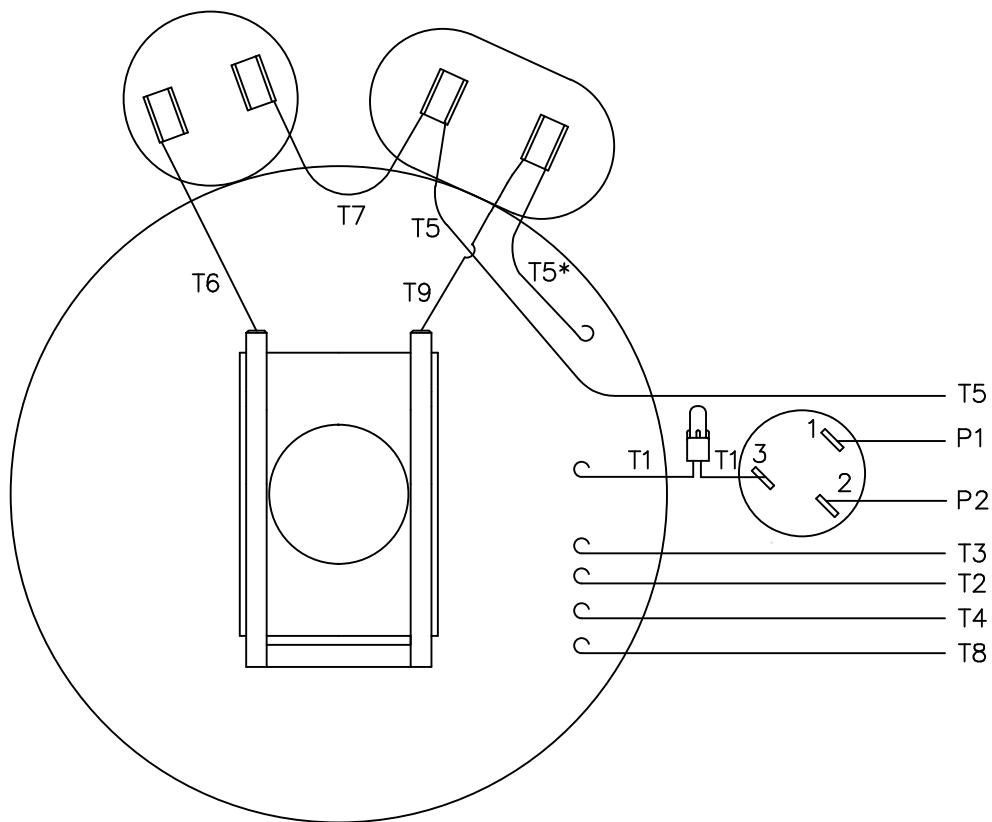


DASH NO.	"C"	"AD"	CAP DASH	"XO"
550	10.99	2.63		
600	11.49	3.13		
650	11.99	3.63		
700	12.49	4.13	A	1.15
750	12.99	4.63	B	1.60
800	13.49	5.13	C	1.82
850	13.99	5.63		

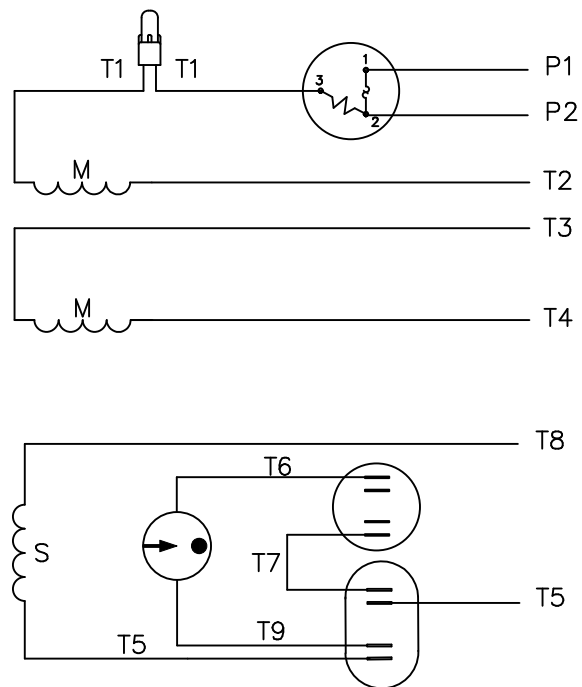
- NOTES:
1) MANUAL OVERLOAD PROTECTOR.
2) FLINGER ON SHAFT.
3) GASKETS THROUGHOUT.
4) DRAIN HOLE IN FRAME (BOTH ENDS).

		TOLERANCES UNLESS SPECIFIED		LEESON ELECTRIC MOTORS GEARMOTORS AND DRIVES		DRAWN GWS 2/8/2012	
		DEC INCHES				CHK	
		X ±.1				APPR	
		XX ±.03		TITLE OUTLINE - 56 FRAME		SCALE 1:2	
		XXX ±.005		TEFC - RIGID		REF 028809	
		XXXX ±.0005		MATL		FMF 117690	
NO		REVISION		BY & DATE		PAGE OF	
		THIRD ANGLE PROJECTION		CHK ANG ±1/2°		SIZE B	
				RFP PREV		DRAWING NO 607-0033	
				NETWORK FILE NAME 607-0033		REV	

VIEW FROM OUTSIDE OF MOTOR AT SWITCH END.



LINE LEADS



	ROTATION FACING LEAD END	L1	L2	JOIN	INSULATE SEPARATELY
HIGH VOLT	C.C.W.	P1	T4 T5	T2,T3 T8	P2
	C.W.	P1	T4 T8	T2,T3 T5	P2
LOW VOLT	C.C.W.	P1	T2,T4 T5	P2,T3 T8	-----
	C.W.	P1	T2,T4 T8	P2,T3 T5	-----

* THIS LEAD MAY BE WHITE

		TOLERANCES UNLESS SPECIFIED	
		DEC.	INCHES
		.X	±.1
		.XX	±.01
04	ADDED "*" TO T5	RLW 7/22/02	.XXX ±.005
03	REDRAWN ON CAD	DBT 05/27/97	.XXXX ±.0005
NO.	REVISION	BY & DATE	CHK ANG ±1/2"

REGAL-BELOIT *Motor Technologies Group*

TITLE EXTERNAL WIRING DIAGRAM
TYPE "K" W/PROTECTOR

MAT'L. DECAL 004011

FINISH

DRAWN ADH 06/16/76

CHK WRK 06/30/76

APPD

SCALE 1=1

REF

FMF 6K17FB8A

PREV

RFP

DIST

CAD FILE 00505302

SIZE

A

DRAWING NO.

005053-02

REV.

04



1051 CHEYENNE AVE.
GRAFTON, WI 53024
PH. 262-377-8810

CERTIFICATION DATA SHEET

CONN. DIAGRAM: 005053.02
OUTLINE: 607-0033-600B
WINDING #: K634341 FR 3 A

CATALOG #: 117690.00
MOUNTING: F1 ONLY

TYPICAL MOTOR PERFORMANCE DATA

HP	kW	SYNC. RPM	F.L. RPM	FRAME	ENCLOSURE	KVA CODE	DESIGN
1/2	0.37	1800	1725	56	TEFC	J	N

PH	Hz	VOLTS	AMPS	START TYPE	DUTY	INSL	S.F.	AMB°C
1	60	115/208-230	5/2.5	ACROSS THE LINE	CONTINUOUS	B4	1.15	40

FULL LOAD EFF:	78	3/4 LOAD EFF:	74.5	1/2 LOAD EFF:	67.5	GTD. EFF	ELEC. TYPE
FULL LOAD PF:	83	3/4 LOAD PF:	85.6	1/2 LOAD PF:	80.1	74	CAP START CAP RUN

F.L. TORQUE	LOCKED ROTOR AMPS	L.R. TORQUE	B.D. TORQUE	F.L. RISE°C
24 OZ-FT	33.2 / 16.6	78 OZ-FT 325 %	70 OZ-FT 292 %	20

SOUND PRESSURE @ 3 FT.	SOUND POWER	ROTOR WK^2	MAX. WK^2	SAFE STALL TIME	STARTS / HOUR	APPROX. MOTOR WGT
0 dBA	10 dBA	0.08 LB-FT^2	0 LB-FT^2	10 SEC.	0	29 LBS.

*** SUPPLEMENTAL INFORMATION ***

DE BRACKET TYPE	ODE BRACKET TYPE	MOUNT TYPE	ORIENTATION	SEVERE DUTY	HAZARDOUS LOCATION	DRIP COVER	SCREENS	PAINT
STANDARD	STANDARD	RIGID	HORIZONTAL	FALSE	NONE	FALSE	NONE	GREEN (ENAMEL)

BEARINGS		GREASE	SHAFT TYPE	SPECIAL DE	SPECIAL ODE	SHAFT MATERIAL	FRAME MATERIAL
DE	ODE						
BALL	BALL						
6203	6203	POLYREX EM	STANDARD 56	NONE	NONE	1144 STRESSPROOF (C-223)	ROLLED STEEL

THERMO-PROTECTORS				THERMISTORS	CONTROL	SPACE HEATERS
THERMOSTATS	PROTECTORS	WDG RTDs	BRG RTDs			
NONE	MANUAL	NONE	NONE	NONE	FALSE	NONE VOLTS

*

N

O

T

E

S

*

INVERTER TORQUE: NONE
INV. HP SPEED RANGE: NONE
ENCODER: NONE
NONE NONE
NONE NONE PPR
BRAKE: NONE NONE
NONE P/N NONE
NONE NONE
NONE FT-LB NONE V NONE Hz



LEESON ELECTRIC CORPORATION

TYPICAL PERFORMANCE CURVE for AC MOTOR

Model No 117690.00Catalog No 117690.00

Curve at

230

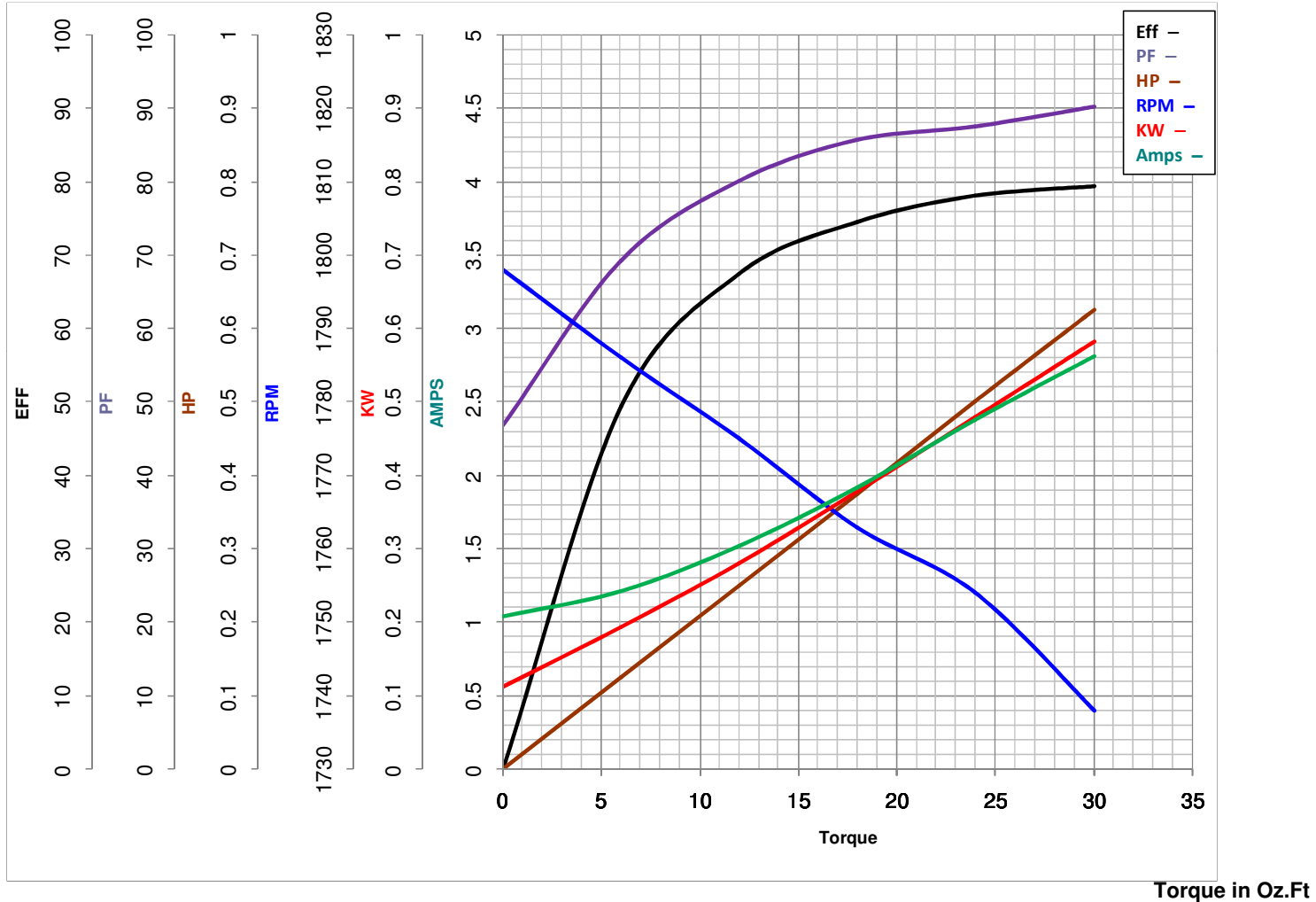
Volts

HP 0.50PHASE 160

HZ

VOLTS 115/208-2300.5

HP

HZ 60RPM 1725

FL TORQUE 24 Oz.Ft
 BD TORQUE 70.0 Oz.Ft
 LR TORQUE 78 Oz.Ft

WINDING K634341-3

FL AMPS 5/2.5
 PU TORQUE 48.0 Oz.Ft
 LR AMPS 16.6

Date 4/24/2018