

DATA SHEET



Single Phase Induction Motor - Squirrel Cage

Customer :					
Product line		: W22 00022 Single-Phase		Product code : 14229636	
Frame	: 213/5T	Locked rotor time	: 10s (cold) 6s (hot)		
Output	: 7.5 HP (5.5 kW)	Temperature rise	: 80 K		
Poles	: 4	Duty cycle	: Cont.(S1)		
Frequency	: 60 Hz	Ambient temperature	: -20°C to +40°C		
Rated voltage	: 230 V	Altitude	: 1000 m.a.s.l.		
Rated current	: 31.7 A	Protection degree	: IP55		
L. R. Amperes	: 244 A	Cooling method	: IC411 - TEFC		
LRC	: 7.7x(Code J)	Mounting	: F-1		
No load current	: 12.8 A	Rotation ¹	: Both (CW and CCW)		
Rated speed	: 1750 rpm	Noise level ²	: 63.0 dB(A)		
Slip	: 2.78 %	Starting method	: Direct On Line		
Rated torque	: 3.11 kgfm	Approx. weight ³	: 81.8 kg		
Locked rotor torque	: 370 %				
Breakdown torque	: 260 %				
Insulation class	: F				
Service factor	: 1.15				
Moment of inertia (J)	: 0.0457 kgm ²				
Output	50%	75%	100%	Foundation loads	
Efficiency (%)	75.6	81.0	83.0	Max. traction : 108 kgf	
Power Factor	0.82	0.88	0.91	Max. compression : 190 kgf	
		<u>Drive end</u>		<u>Non drive end</u>	
Bearing type	:	6308 2RS		6206 2RS	
Sealing	:	V'Ring		V'Ring	
Lubrication interval	:	-		-	
Lubricant amount	:	-		-	
Lubricant type	:	Mobil Polyrex EM			
Notes					
This revision replaces and cancel the previous one, which must be eliminated. (1) Looking the motor from the shaft end. (2) Measured at 1m and with tolerance of +3dB(A). (3) Approximate weight subject to changes after manufacturing process. (4) At 100% of full load.			These are average values based on tests with sinusoidal power supply, subject to the tolerances stipulated in NEMA MG-1.		
Rev.	Changes Summary		Performed	Checked	Date
Performed by					
Checked by				Page	Revision
Date	29/10/2024			1 / 2	

LOAD PERFORMANCE CURVE

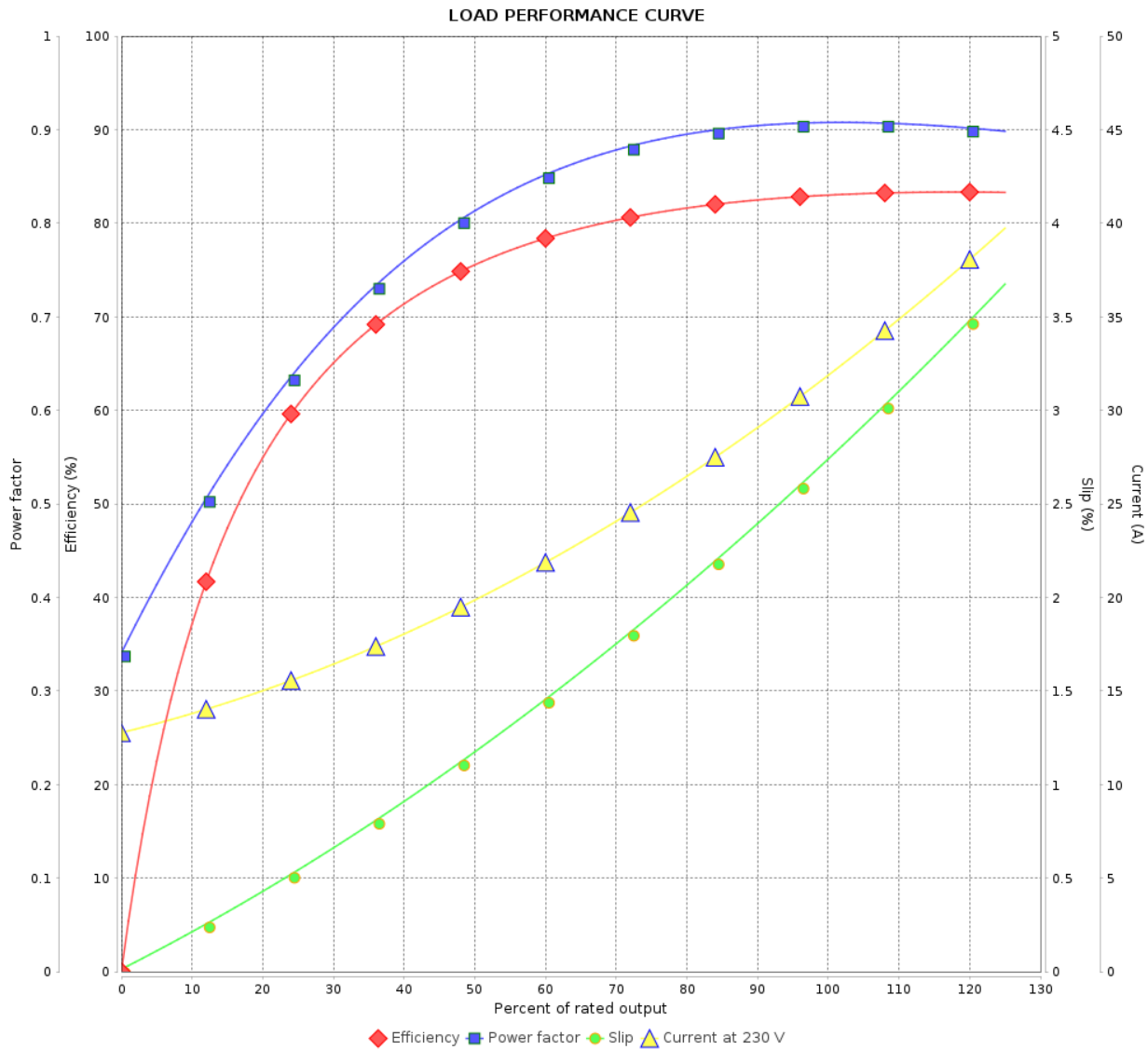
Single Phase Induction Motor - Squirrel Cage



Customer :

Product line : W22 00022 Single-Phase

Product code : 14229636



Performance : 230 V 60 Hz 4P

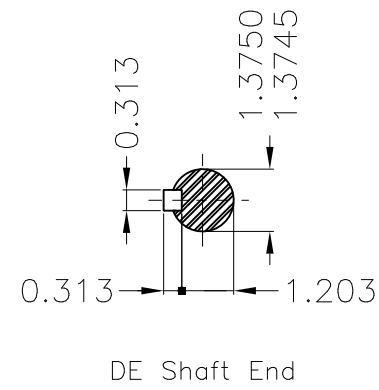
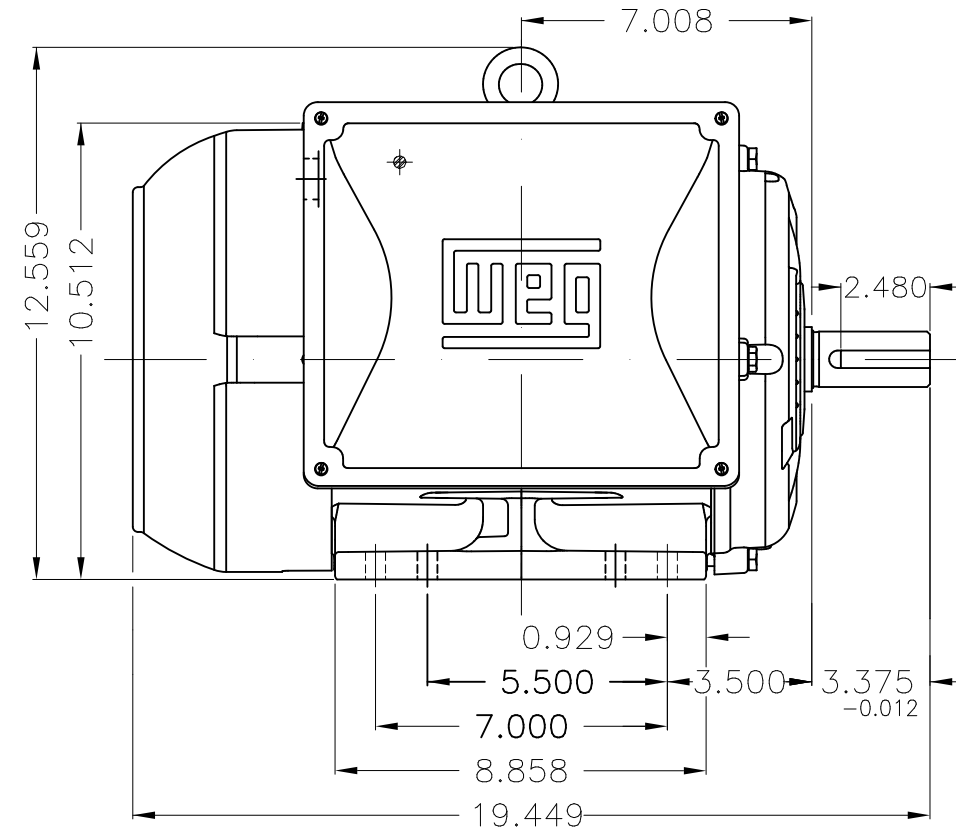
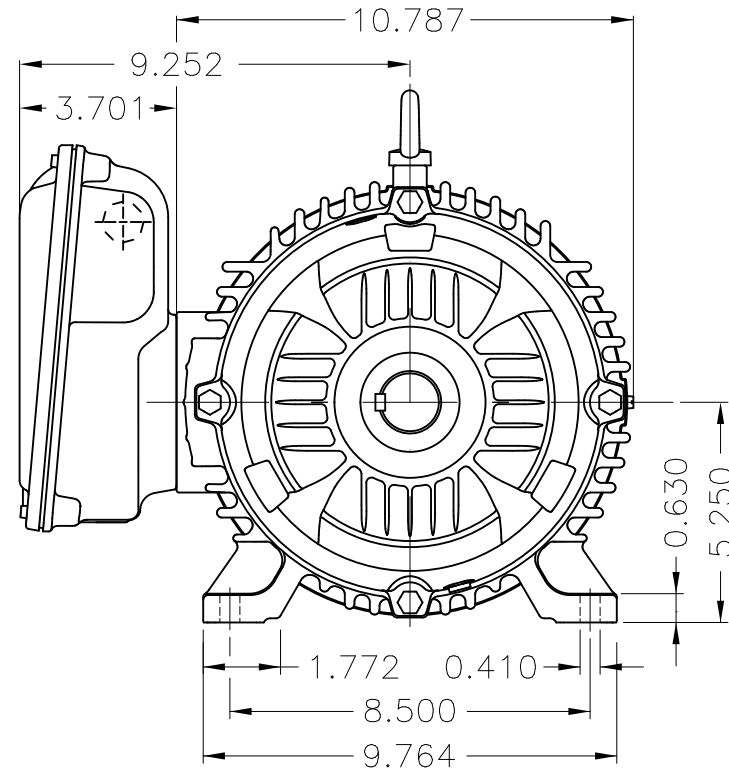
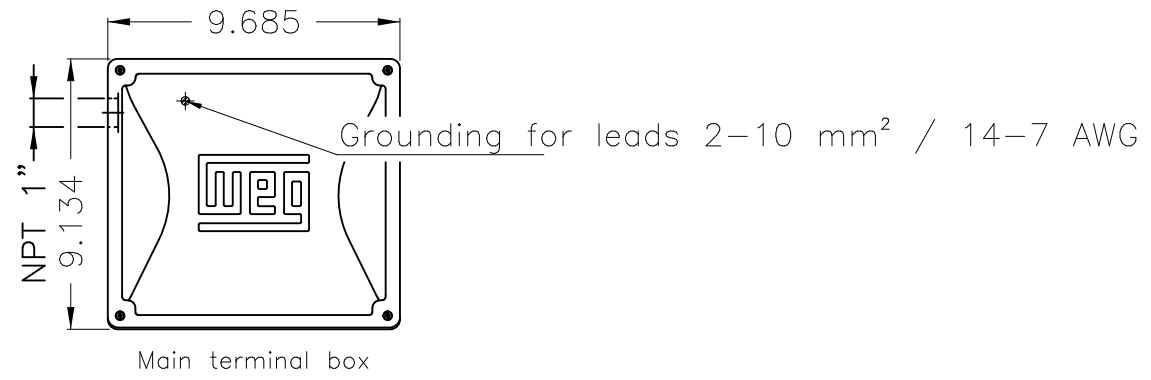
Rated current : 31.7 A
 LRC : 7.7
 Rated torque : 3.11 kgfm
 Locked rotor torque : 370 %
 Breakdown torque : 260 %
 Rated speed : 1750 rpm

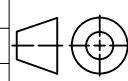

Moment of inertia (J) : 0.0457 kgm²
 Duty cycle : Cont.(S1)
 Insulation class : F
 Service factor : 1.15
 Temperature rise : 80 K

Rev.	Changes Summary	Performed	Checked	Date
Performed by			Page 2 / 2	Revision
Checked by				
Date	29/10/2024			

1 2 3 4 5 6

A
B
C
D
E



Mounting NEMA F-1														
Mounting B3R(D)														
								HYBRISUSER		00				
ECM	LOC	SUMMARY OF MODIFICATIONS					EXECUTED	CHECKED	RELEASED	DATE	VER			
EXECUTED	HYBRISUSER	 SINGLE PH. MOTOR W22 FARM DUTY FRAME 213/5T IP55 TEFC					PREVIEW		WDD		00			
CHECKED							SHEET		1 / 1					
RELEASED														
REL. DATE		WMO	Jaragua do Sul	Product Engineering	SHEET 1 / 1									

7.5 HP 04 Poles 60 Hz

A